

# \$599,500 - 4641 Kinsella Landing, Edmonton

MLS® #E4463825

**\$599,500**

3 Bedroom, 2.50 Bathroom, 1,807 sqft  
Single Family on 0.00 Acres

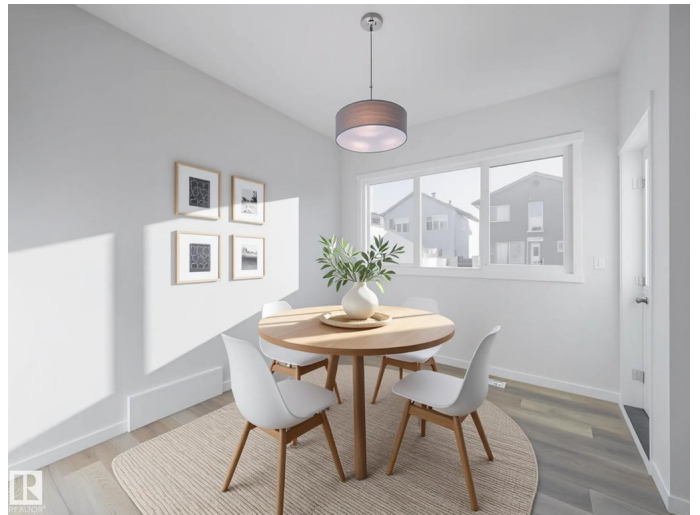
Keswick, Edmonton, AB

Step into a home where thoughtful design meets timeless craftsmanship. This Coventry Homes masterpiece, complete with a SEPARATE ENTRANCE, welcomes you with 9'™ ceilings and a bright, open-concept layout that feels instantly inviting. At the heart of the home, the kitchen blends style and function with quartz countertops, a tile backsplash, walk-through pantry, and beautifully crafted cabinetry. The great room and dining nook create the perfect setting for everyday living or gathering with loved ones. Upstairs, unwind in your serene primary suite featuring a spa-inspired ensuite with dual sinks, a soaker tub, and a stand-up shower. Two additional bedrooms, a versatile bonus room, and upper-floor laundry add space and convenience for the whole family. Built with care and backed by the Alberta New Home Warranty Program. Home is under construction; photos are not of actual home, some finishings may vary, some photos are virtually staged.

Built in 2025

## Essential Information

MLS® #	E4463825
Price	\$599,500
Bedrooms	3



Bathrooms	2.50
Full Baths	2
Half Baths	1
Square Footage	1,807
Acres	0.00
Year Built	2025
Type	Single Family
Sub-Type	Detached Single Family
Style	2 Storey
Status	Active

### **Community Information**

Address	4641 Kinsella Landing
Area	Edmonton
Subdivision	Keswick
City	Edmonton
County	ALBERTA
Province	AB
Postal Code	T6W 5T8

### **Amenities**

Amenities	Carbon Monoxide Detectors, Ceiling 9 ft., Detectors Smoke, Smart/Program. Thermostat, Vinyl Windows, HRV System
Parking	Double Garage Attached

### **Interior**

Interior Features	ensuite bathroom
Appliances	None
Heating	Forced Air-1, Natural Gas
Stories	2
Has Basement	Yes
Basement	Full, Unfinished

### **Exterior**

Exterior	Wood, Vinyl
Exterior Features	Playground Nearby, Public Transportation, Schools, Shopping Nearby
Roof	Asphalt Shingles
Construction	Wood, Vinyl
Foundation	Concrete Perimeter

## Additional Information

Date Listed            October 28th, 2025

Days on Market      3

Zoning                Zone 56

DATA IS DEEMED RELIABLE BUT IS NOT GUARANTEED ACCURATE BY THE REALTORS® ASSOCIATION OF EDMONTON. COPYRIGHT 2025 BY THE REALTORS® ASSOCIATION OF EDMONTON. ALL RIGHTS RESERVED. Trademarks are owned or controlled by the Canadian Real Estate Association (CREA) and identify real estate professionals who are members of CREA (REALTOR®, REALTORS®) and/or the quality of services they provide (MLS®, Multiple Listing Service®)

Listing information last updated on October 31st, 2025 at 10:47am MDT