

Courtesy Of David M Estephan Of RE/MAX Elite

## \$219,900 - 231 Roseland Village, Edmonton

MLS® #E4462714

**\$219,900**

3 Bedroom, 1.50 Bathroom, 1,157 sqft  
Condo / Townhouse on 0.00 Acres

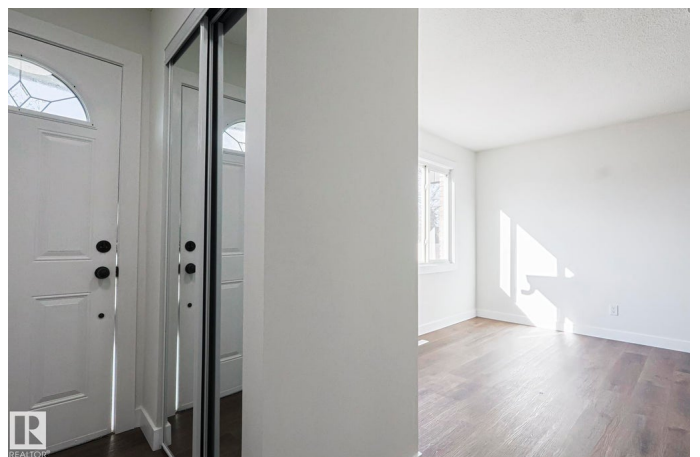
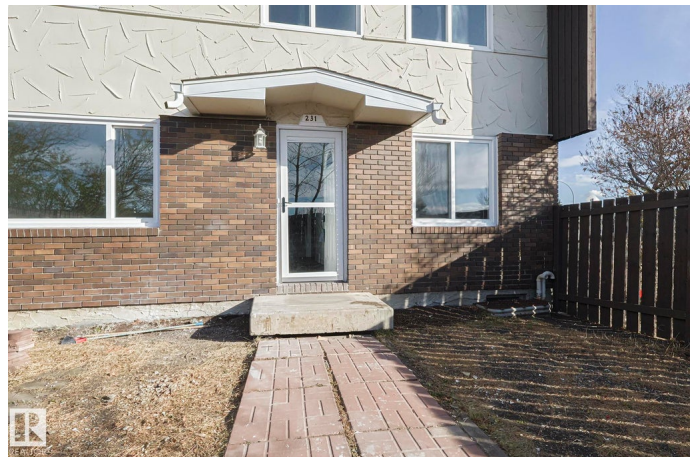
Northmount (Edmonton), Edmonton, AB

**FIRST TIME BUYER OPPORTUNITY!** This **FULLY RENOVATED 3-bedroom END UNIT** townhome in desirable Roseland Village is absolutely gorgeous! Perfectly located across from a park and greenspace, it offers both style and convenience. Featuring rich vinyl plank flooring, designer lighting, and high-end finishes throughout, this home impresses at every turn. The open-concept main floor showcases a stunning new kitchen with white cabinetry, elegant black subway tile backsplash, and quality stainless steel appliances. The bright living room has a large picture window filling the space with natural light, plus a stylish 2-piece bath on the main level. Upstairs you'll find 3 spacious bedrooms with mirrored closets and a beautifully updated bathroom with custom tile and modern fixtures. Enjoy a private fenced yard surrounded by mature trees, plus your own parking stall. The **LOW CONDO FEES** in a well-managed complex offers unbeatable value—just move in and enjoy!

Built in 1969

### Essential Information

MLS® #	E4462714
Price	\$219,900
Bedrooms	3



Bathrooms	1.50
Full Baths	1
Half Baths	1
Square Footage	1,157
Acres	0.00
Year Built	1969
Type	Condo / Townhouse
Sub-Type	Townhouse
Style	2 Storey
Status	Active

### **Community Information**

Address	231 Roseland Village
Area	Edmonton
Subdivision	Northmount (Edmonton)
City	Edmonton
County	ALBERTA
Province	AB
Postal Code	T5E 5R6

### **Amenities**

Amenities	Parking-Plug-Ins
Parking	Stall

### **Interior**

Appliances	Dishwasher-Built-In, Dryer, Refrigerator, Stove-Electric, Washer
Heating	Forced Air-1, Natural Gas
Stories	2
Has Basement	Yes
Basement	Full, Unfinished

### **Exterior**

Exterior	Wood, Brick
Exterior Features	Fenced, Playground Nearby, Public Transportation, Schools, Shopping Nearby
Roof	Asphalt Shingles
Construction	Wood, Brick
Foundation	Concrete Perimeter

### **Additional Information**

Date Listed	October 18th, 2025
Days on Market	12
Zoning	Zone 02
Condo Fee	\$300

DATA IS DEEMED RELIABLE BUT IS NOT GUARANTEED ACCURATE BY THE REALTORS® ASSOCIATION OF EDMONTON. COPYRIGHT 2025 BY THE REALTORS® ASSOCIATION OF EDMONTON. ALL RIGHTS RESERVED. Trademarks are owned or controlled by the Canadian Real Estate Association (CREA) and identify real estate professionals who are members of CREA (REALTOR®, REALTORS®) and/or the quality of services they provide (MLS®, Multiple Listing Service®)

Listing information last updated on October 30th, 2025 at 5:47pm MDT