

\$222,500 - 223 Dickinsfield Court, Edmonton

MLS® #E4462532

\$222,500

3 Bedroom, 1.50 Bathroom, 1,173 sqft
Condo / Townhouse on 0.00 Acres

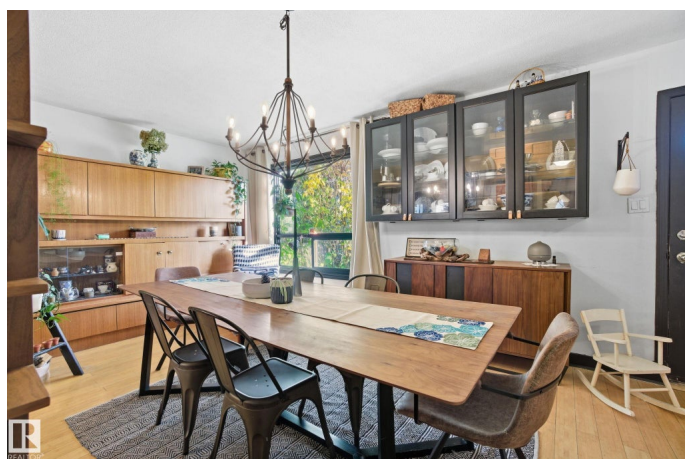
Evansdale, Edmonton, AB

Located in Evansdale, close to schools, playgrounds and transportation, makes this a great place to call home. Ideal for a first-time homeowner or someone wanting an easy-care lifestyle. 3 bedrooms up with a remodelled 4 piece bathroom. The main floor has hardwood flooring, an updated kitchen, an island working area, a half bath and a large living room with south-facing windows. But wait! Do you like to entertain? Or, perhaps, simply have more room for sit-down meals? If so, then you will appreciate how the living room is being used as an eating/dining room to gather with family and friends. And it totally makes sense, especially since there is a wonderful lounge area in the finished basement. Plus, a fenced patio backing onto a walkway. Close to amenities. With it's eclectic flare, this home is for someone special. It's for people who think "out of the box"; who want something that doesn't look like everyone else's place. If this describes you, then be sure to put this on your list of must see homes.

Built in 1972

Essential Information

MLS® #	E4462532
Price	\$222,500
Bedrooms	3



Bathrooms	1.50
Full Baths	1
Half Baths	1
Square Footage	1,173
Acres	0.00
Year Built	1972
Type	Condo / Townhouse
Sub-Type	Townhouse
Style	2 Storey
Status	Active

Community Information

Address	223 Dickinsfield Court
Area	Edmonton
Subdivision	Evansdale
City	Edmonton
County	ALBERTA
Province	AB
Postal Code	T5E 5V8

Amenities

Amenities	On Street Parking, Hot Water Natural Gas, No Animal Home, No Smoking Home, Parking-Plug-Ins, Patio, Vinyl Windows
Parking Spaces	1
Parking	Stall

Interior

Appliances	Dishwasher-Built-In, Dryer, Refrigerator, Stove-Electric, Washer, Window Coverings
Heating	Forced Air-1, Natural Gas
Stories	3
Has Basement	Yes
Basement	Full, Finished

Exterior

Exterior	Wood, Vinyl
Exterior Features	Fenced, Flat Site, Landscaped, Park/Reserve, Playground Nearby, Public Swimming Pool, Public Transportation, Schools, Shopping Nearby

Roof	Asphalt Shingles
Construction	Wood, Vinyl
Foundation	Concrete Perimeter

School Information

Elementary	Evansdale
Middle	Dickensfield
High	Queen Elizabeth

Additional Information

Date Listed	October 17th, 2025
Days on Market	13
Zoning	Zone 02
Condo Fee	\$225

DATA IS DEEMED RELIABLE BUT IS NOT GUARANTEED ACCURATE BY THE REALTORS® ASSOCIATION OF EDMONTON. COPYRIGHT 2025 BY THE REALTORS® ASSOCIATION OF EDMONTON. ALL RIGHTS RESERVED. Trademarks are owned or controlled by the Canadian Real Estate Association (CREA) and identify real estate professionals who are members of CREA (REALTOR®, REALTORS®) and/or the quality of services they provide (MLS®, Multiple Listing Service®)

Listing information last updated on October 30th, 2025 at 5:47pm MDT