

# \$169,900 - 331 592 Hooke Road, Edmonton

MLS® #E4457607

**\$169,900**

2 Bedroom, 1.00 Bathroom, 972 sqft

Condo / Townhouse on 0.00 Acres

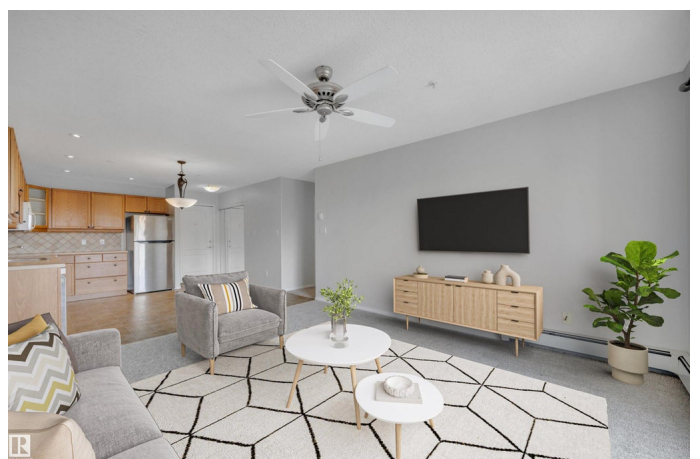
Canon Ridge, Edmonton, AB

Welcome to the Ravines at Hermitage! This 2 bedroom / 18+ condominium is ideally located along Victoria Trail and close to the walking trails of Hermitage Park. Recent updates include new carpets and fresh paint throughout. The open concept layout welcomes you into the spacious kitchen with ample cabinets and counter space. Enjoy entertaining in your bright living room and on your south-facing balcony. The primary suite offers an oversized walk-in closet and an adjacent 4 piece main bath. An additional bedroom and the in-suite laundry / storage room completes the main living area. Convenience is key with a titled and covered surface stall, and access to the building's social room with pool table and kitchen. A must see!

Built in 2003

## Essential Information

MLS® #	E4457607
Price	\$169,900
Bedrooms	2
Bathrooms	1.00
Full Baths	1
Square Footage	972
Acres	0.00
Year Built	2003



Type	Condo / Townhouse
Sub-Type	Lowrise Apartment
Style	Single Level Apartment
Status	Active

### Community Information

Address	331 592 Hooke Road
Area	Edmonton
Subdivision	Canon Ridge
City	Edmonton
County	ALBERTA
Province	AB
Postal Code	T5A 5H2

### Amenities

Amenities	No Animal Home, No Smoking Home, Parking-Extra, Parking-Plug-Ins, Parking-Visitor, Party Room, Recreation Room/Centre, Security Door
Parking Spaces	1
Parking	Single Carport, Stall

### Interior

Appliances	Dishwasher-Built-In, Euro Washer/Dryer Combo, Fan-Ceiling, Garburator, Microwave Hood Fan, Refrigerator, Stove-Electric, Window Coverings
Heating	Hot Water, Natural Gas
# of Stories	4
Stories	1
Has Basement	Yes
Basement	None, No Basement

### Exterior

Exterior	Wood, Stucco, Vinyl
Exterior Features	Park/Reserve, Playground Nearby, Public Transportation, Shopping Nearby
Roof	Asphalt Shingles
Construction	Wood, Stucco, Vinyl
Foundation	Concrete Perimeter

### School Information

Elementary	Anne Fitzgerald,Overlander
------------	----------------------------

Middle	St. Eliza. Seton,JD Bracco
High	Austin O'Brien, Eastglen

### **Additional Information**

Date Listed	September 12th, 2025
Days on Market	1
Zoning	Zone 35
Condo Fee	\$512

DATA IS DEEMED RELIABLE BUT IS NOT GUARANTEED ACCURATE BY THE REALTORS® ASSOCIATION OF EDMONTON. COPYRIGHT 2025 BY THE REALTORS® ASSOCIATION OF EDMONTON. ALL RIGHTS RESERVED.Trademarks are owned or controlled by the Canadian Real Estate Association (CREA) and identify real estate professionals who are members of CREA (REALTOR®, REALTORS®) and/or the quality of services they provide (MLS®, Multiple Listing Service®)

Listing information last updated on September 13th, 2025 at 1:17pm MDT