

Courtesy Of Kalan M Savill Of RE/MAX River City

\$419,900 - 1817 Westerra Loop, Stony Plain

MLS® #E4455970

\$419,900

3 Bedroom, 2.50 Bathroom, 1,520 sqft
Single Family on 0.00 Acres

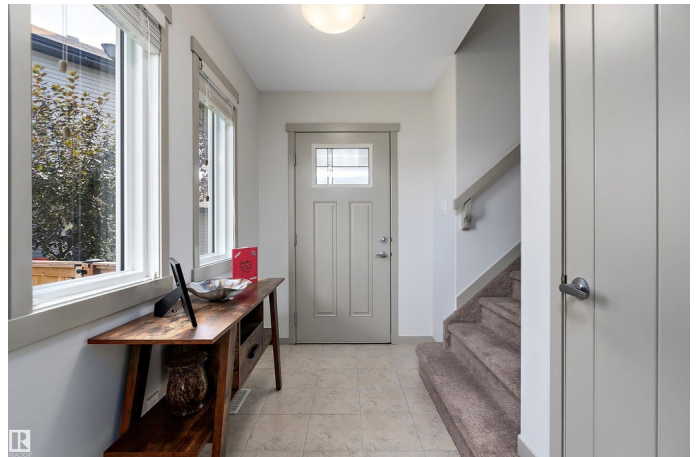
Westerra, Stony Plain, AB

Welcome to this stunning Coventry-built half duplex with A/C on a massive 546.83 m² pie-shaped lot—fully fenced, beautifully landscaped, and move-in ready. Step into a spacious, thoughtfully designed home featuring an upgraded kitchen with 1.25" granite countertops, stainless steel appliances, walk-in pantry, abundant cabinetry, and ample prep space. The large living room, with durable laminate floors, centers on a cozy gas fireplace, while the tiled entryway adds style and function. Enjoy summer evenings on the pressure-treated deck. Upstairs offers 3 generous bedrooms, a laundry room with a drain and tiled basin for peace of mind, and a primary retreat with walk-in closet and 3-piece ensuite with double shower. The oversized heated 25'6"x17'1" garage adds storage and convenience. With all the right details and quality construction by Coventry, this home combines comfort, function, and style in one perfect package! Located close to schools, shopping (the new Costco!), on a quiet cul-de-sac!

Built in 2016

Essential Information

MLS® #	E4455970
Price	\$419,900



Bedrooms	3
Bathrooms	2.50
Full Baths	2
Half Baths	1
Square Footage	1,520
Acres	0.00
Year Built	2016
Type	Single Family
Sub-Type	Half Duplex
Style	2 Storey
Status	Active

Community Information

Address	1817 Westerra Loop
Area	Stony Plain
Subdivision	Westerra
City	Stony Plain
County	ALBERTA
Province	AB
Postal Code	T7Z 0L8

Amenities

Amenities	Off Street Parking, On Street Parking, Air Conditioner, Ceiling 9 ft., Deck, Exterior Walls- 2"x6", No Smoking Home
Parking Spaces	4
Parking	Double Garage Attached

Interior

Interior Features	ensuite bathroom
Appliances	Dishwasher-Built-In, Dryer, Garage Control, Garage Opener, Microwave Hood Fan, Refrigerator, Stove-Electric, Washer, Window Coverings
Heating	Forced Air-1, Natural Gas
Fireplaces	Tile Surround
Stories	2
Has Basement	Yes
Basement	Full, Unfinished

Exterior

Exterior	Wood, Brick, Vinyl
----------	--------------------

Exterior Features	Fenced, Landscaped, Low Maintenance Landscape, Public Transportation, Schools, Shopping Nearby
Roof	Asphalt Shingles
Construction	Wood, Brick, Vinyl
Foundation	Concrete Perimeter

School Information

Elementary	High Park School
Middle	High Park School
High	Memorial Composite

Additional Information

Date Listed	September 4th, 2025
Days on Market	10
Zoning	Zone 91

DATA IS DEEMED RELIABLE BUT IS NOT GUARANTEED ACCURATE BY THE REALTORS® ASSOCIATION OF EDMONTON. COPYRIGHT 2025 BY THE REALTORS® ASSOCIATION OF EDMONTON. ALL RIGHTS RESERVED. Trademarks are owned or controlled by the Canadian Real Estate Association (CREA) and identify real estate professionals who are members of CREA (REALTOR®, REALTORS®) and/or the quality of services they provide (MLS®, Multiple Listing Service®)

Listing information last updated on September 14th, 2025 at 3:17pm MDT