

\$3,000 - 3571 Cherry Landing Landing, Edmonton

MLS® #E4452855

\$3,000

3 Bedroom, 2.50 Bathroom, 2,438 sqft

Rental on 0.00 Acres

The Orchards At Ellerslie, Edmonton, AB

Welcome to this spacious and beautiful family home, perfectly located in the desirable community of The Orchards in south Edmonton. This 2400 sq ft property offers exceptional comfort and convenience with easy access to major roadways like Anthony Henday, 91 Street, and Ellerslie Road. The main floor features an open-concept layout with a cozy living room and a chef's kitchen, complete with a large island, stainless steel appliances, and a walk-through pantry. The dining area leads to a deck and a fully fenced, landscaped backyard, ideal for entertaining. Upstairs, you'll find a spacious bonus room, a separate office space, and three generous bedrooms. The luxurious primary suite includes a his and her closet, soaking tub and a standing shower. A laundry room is also conveniently located on this floor. Additional features include a double-attached garage, central air conditioning, and a security system available. Located in a prime spot close to schools, parks, and The Orchards Club House.

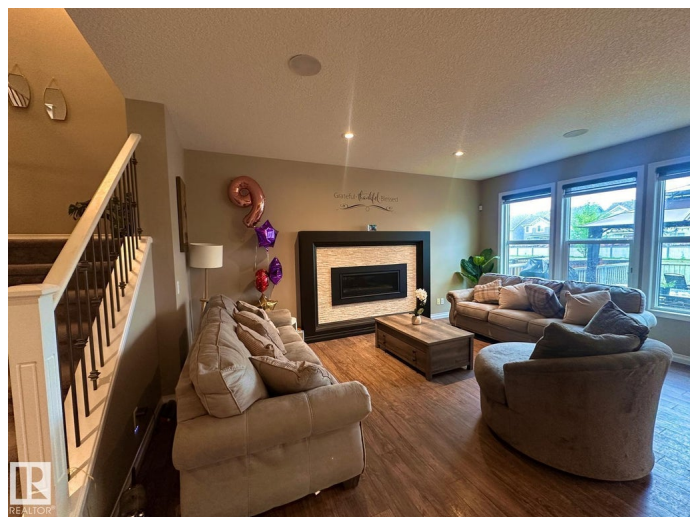
Built in 2016

Essential Information

MLS® # E4452855

Price \$3,000

Bedrooms 3



Bathrooms	2.50
Full Baths	2
Half Baths	1
Square Footage	2,438
Acres	0.00
Year Built	2016
Type	Rental
Style	2 Storey
Status	Active

Community Information

Address	3571 Cherry Landing Landing
Area	Edmonton
Subdivision	The Orchards At Ellerslie
City	Edmonton
County	ALBERTA
Province	AB
Postal Code	T6X 2B5

Amenities

Parking	Double Garage Attached, Insulated
---------	-----------------------------------

Interior

Appliances	Air Conditioning-Central, Dishwasher-Built-In, Dryer, Microwave Hood Fan, Oven-Microwave, Refrigerator, Stove-Gas, Washer
------------	---

Additional Information

Date Listed	August 14th, 2025
Days on Market	4
Zoning	Zone 53

DATA IS DEEMED RELIABLE BUT IS NOT GUARANTEED ACCURATE BY THE REALTORS® ASSOCIATION OF EDMONTON. COPYRIGHT 2025 BY THE REALTORS® ASSOCIATION OF EDMONTON. ALL RIGHTS RESERVED. Trademarks are owned or controlled by the Canadian Real Estate Association (CREA) and identify real estate professionals who are members of CREA (REALTOR®, REALTORS®) and/or the quality of services they provide (MLS®, Multiple Listing Service®)

Listing information last updated on August 18th, 2025 at 5:17am MDT