

\$413,700 - 1341 Keswick Drive, Edmonton

MLS® #E4447597

\$413,700

3 Bedroom, 2.50 Bathroom, 1,280 sqft
Single Family on 0.00 Acres

Keswick, Edmonton, AB

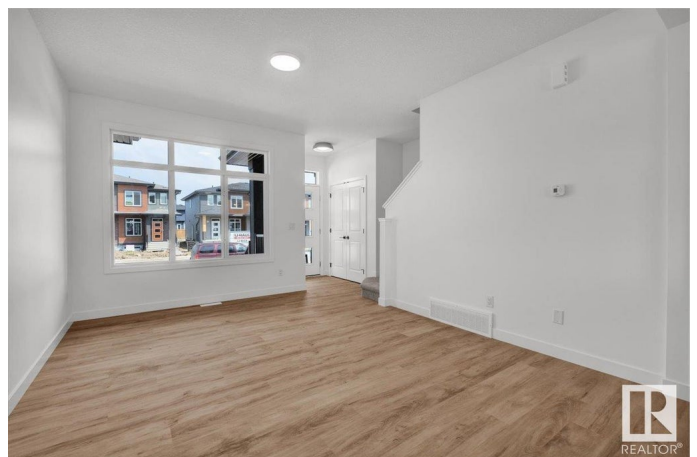
QUICK POSSESSION NO CONDO FEES!!

Middle unit of a 4plex townhome in the Keswick community with a detached garage. Enter the home with 9' ceilings on the main floor and easy flow layout. Kitchen features light wood toned cabinets, 3m quartz countertops, modern finishes and \$3,000 appliance allowance. The upper floor has laundry, 4pc main bath and 3 bedrooms including a primary bedroom with a walk in closet and 4pc ensuite. This home is perfect for starting to build for your future! Close to walking trails, parks and ponds. Under construction near end, possession 35-45 days after removal. Front & back landscaping included. Photos from a previous build & may differ; interior colors are represented, upgrades may vary appliances not included. HOA TBD.

Built in 2025

Essential Information

MLS® #	E4447597
Price	\$413,700
Bedrooms	3
Bathrooms	2.50
Full Baths	2
Half Baths	1
Square Footage	1,280



Acres	0.00
Year Built	2025
Type	Single Family
Sub-Type	Residential Attached
Style	2 Storey
Status	Active

Community Information

Address	1341 Keswick Drive
Area	Edmonton
Subdivision	Keswick
City	Edmonton
County	ALBERTA
Province	AB
Postal Code	T6W 4V8

Amenities

Amenities	Ceiling 9 ft., See Remarks
Parking	Single Garage Detached
Is Waterfront	Yes

Interior

Interior Features	ensuite bathroom
Appliances	Garage Control, Garage Opener, See Remarks
Heating	Forced Air-1, Natural Gas
Stories	2
Has Basement	Yes
Basement	Full, Unfinished

Exterior

Exterior	Wood, Vinyl
Exterior Features	Airport Nearby, Playground Nearby, Public Transportation, Schools, Shopping Nearby, Stream/Pond
Roof	Asphalt Shingles
Construction	Wood, Vinyl
Foundation	Concrete Perimeter

Additional Information

Date Listed	July 14th, 2025
-------------	-----------------

Days on Market	65
Zoning	Zone 56
HOA Fees	1
HOA Fees Freq.	Annually

DATA IS DEEMED RELIABLE BUT IS NOT GUARANTEED ACCURATE BY THE REALTORS® ASSOCIATION OF EDMONTON. COPYRIGHT 2025 BY THE REALTORS® ASSOCIATION OF EDMONTON. ALL RIGHTS RESERVED. Trademarks are owned or controlled by the Canadian Real Estate Association (CREA) and identify real estate professionals who are members of CREA (REALTOR®, REALTORS®) and/or the quality of services they provide (MLS®, Multiple Listing Service®)

Listing information last updated on September 17th, 2025 at 11:32am MDT