

## \$125,000 - N/A, Sherwood Park

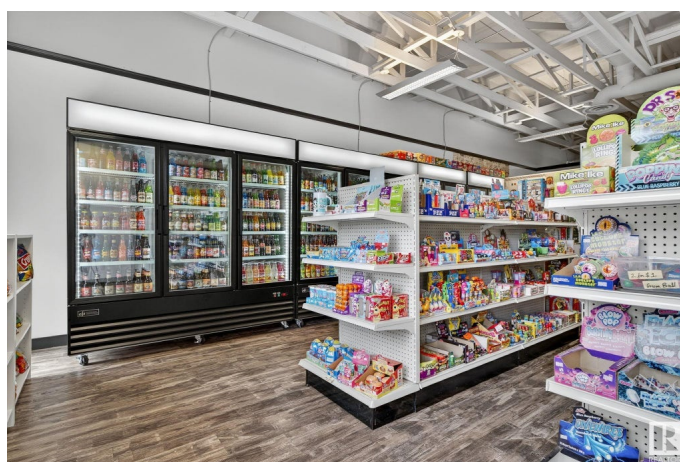
MLS® #E4446835

**\$125,000**

0 Bedroom, 0.00 Bathroom,  
Business on 0.00 Acres

Wye Commercial, Sherwood Park, AB

This specialty retail business offers a carefully curated selection of imported and nostalgic snacks and beverages, drawing customers with rare finds from Japan, Korea, the UK, USA, Mexico, and more. From hard-to-find international candies to classic childhood favorites, the store caters to a wide range of tastes and age groups. Its strategic location near a daycare, multiple schools, and a high-traffic Tim Hortons ensures steady daily footfall from families, students, and local residents. The business runs with a simple retail model, low overhead, and strong product margins, making it easy to operate. With rising demand for global and nostalgic treats—and untapped potential in online sales or community engagement—this is a turnkey opportunity for anyone looking to own a distinctive and growing retail venture. To proceed and share the confidential business details, a Non-Disclosure Agreement (NDA) must be signed. Find the NDA form in the Document attached.



### Essential Information

MLS® #	E4446835
Price	\$125,000
Bathrooms	0.00
Acres	0.00

Type	Business
Status	Active

### Community Information

Address	N/A
Area	Sherwood Park
Subdivision	Wye Commercial
City	Sherwood Park
County	ALBERTA
Province	AB
Postal Code	T8A 6G3

### Additional Information

Date Listed	July 8th, 2025
Days on Market	25
Zoning	Zone 25

DATA IS DEEMED RELIABLE BUT IS NOT GUARANTEED ACCURATE BY THE REALTORS® ASSOCIATION OF EDMONTON. COPYRIGHT 2025 BY THE REALTORS® ASSOCIATION OF EDMONTON. ALL RIGHTS RESERVED. Trademarks are owned or controlled by the Canadian Real Estate Association (CREA) and identify real estate professionals who are members of CREA (REALTOR®, REALTORS®) and/or the quality of services they provide (MLS®, Multiple Listing Service®)

Listing information last updated on August 2nd, 2025 at 3:02pm MDT