

\$0 - 27195 Ellis Road, Rural Parkland County

MLS® #E4446451

\$0

0 Bedroom, 0.00 Bathroom,
Industrial on 0.00 Acres

Acheson Industrial, Rural Parkland County, AB

Location, Location! A rare lease opportunity in the well known Acheson industrial park. This 4,000 SF freestanding warehouse sits on a fully fenced and secure yard, ideal for businesses needing space, quick access to major routes, and high visibility from Highway 16A. 3 OH bay doors, 2 at back 14x14 and 1 on side 12x12. Freestanding buildings with yard space do not come up often in Acheson.

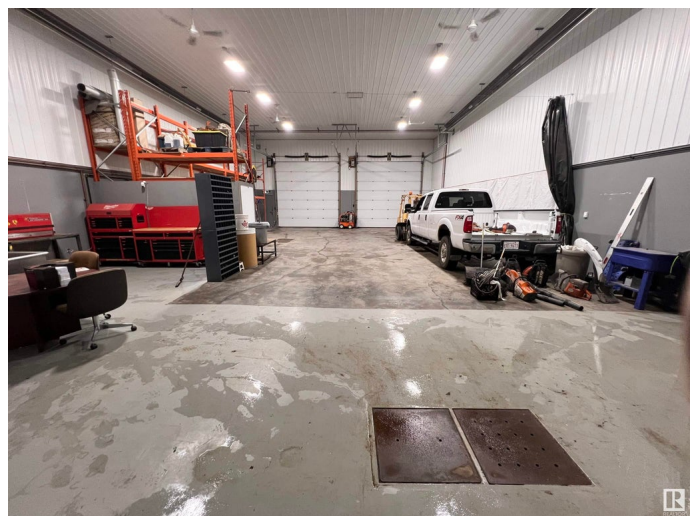
Built in 2019

Essential Information

MLS® #	E4446451
Bathrooms	0.00
Acres	0.00
Year Built	2019
Type	Industrial
Status	Active

Community Information

Address	27195 Ellis Road
Area	Rural Parkland County
Subdivision	Acheson Industrial
City	Rural Parkland County
County	ALBERTA
Province	AB
Postal Code	T7X 5A7



Exterior

Exterior	Wood Frame, Steel Frame
Construction	Wood Frame, Steel Frame

Additional Information

Date Listed	July 7th, 2025
Days on Market	21
Zoning	Zone 70

DATA IS DEEMED RELIABLE BUT IS NOT GUARANTEED ACCURATE BY THE REALTORS® ASSOCIATION OF EDMONTON. COPYRIGHT 2025 BY THE REALTORS® ASSOCIATION OF EDMONTON. ALL RIGHTS RESERVED.Trademarks are owned or controlled by the Canadian Real Estate Association (CREA) and identify real estate professionals who are members of CREA (REALTOR®, REALTORS®) and/or the quality of services they provide (MLS®, Multiple Listing Service®)

Listing information last updated on July 28th, 2025 at 1:32pm MDT