

\$449,000 - 10 Hunter Place, Spruce Grove

MLS® #E4446048

\$449,000

3 Bedroom, 2.50 Bathroom, 1,711 sqft
Single Family on 0.00 Acres

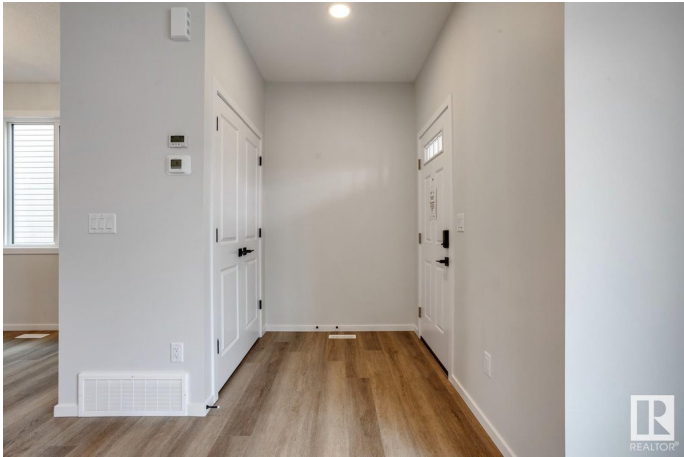
Harvest Ridge, Spruce Grove, AB

5 Things to Love About This Home: 1) Stylish & Spacious – This brand new 2-storey home features a bright open-concept layout with a cozy electric fireplace anchoring the living area. 2) Modern Kitchen – Enjoy cooking and entertaining with a large island, breakfast bar seating, and seamless flow into the dining space. 3) Thoughtful Upstairs Layout – The upper level includes a bonus room, 4pc bath with linen storage, and convenient upstairs laundry. 4) Private Primary Suite – Retreat to the spacious primary bedroom with walk-in closet and spa-like 5pc ensuite including double sinks. 5) Smart Features – A separate side entrance offers future suite potential, and the back lane adds extra flexibility. *Photos are representative*

Built in 2025

Essential Information

| | |
|----------------|-----------|
| MLS® # | E4446048 |
| Price | \$449,000 |
| Bedrooms | 3 |
| Bathrooms | 2.50 |
| Full Baths | 2 |
| Half Baths | 1 |
| Square Footage | 1,711 |
| Acres | 0.00 |



| | |
|------------|------------------------|
| Year Built | 2025 |
| Type | Single Family |
| Sub-Type | Detached Single Family |
| Style | 2 Storey |
| Status | Active |

Community Information

| | |
|-------------|-----------------|
| Address | 10 Hunter Place |
| Area | Spruce Grove |
| Subdivision | Harvest Ridge |
| City | Spruce Grove |
| County | ALBERTA |
| Province | AB |
| Postal Code | T7X 3W3 |

Amenities

| | |
|-----------|--|
| Amenities | Exterior Walls- 2"x6", No Animal Home, No Smoking Home |
| Parking | Parking Pad Cement/Paved |

Interior

| | |
|-------------------|---|
| Interior Features | ensuite bathroom |
| Appliances | Dishwasher-Built-In, Microwave Hood Fan, Refrigerator, Stove-Electric |
| Heating | Forced Air-1, Natural Gas |
| Fireplace | Yes |
| Fireplaces | Insert |
| Stories | 2 |
| Has Basement | Yes |
| Basement | Full, Unfinished |

Exterior

| | |
|-------------------|--|
| Exterior | Wood, Vinyl |
| Exterior Features | Back Lane, Park/Reserve, Playground Nearby, Schools, Shopping Nearby |
| Roof | Asphalt Shingles |
| Construction | Wood, Vinyl |
| Foundation | Concrete Perimeter |

Additional Information

| | |
|-------------|----------------|
| Date Listed | July 4th, 2025 |
|-------------|----------------|

Days on Market 72

Zoning Zone 91

DATA IS DEEMED RELIABLE BUT IS NOT GUARANTEED ACCURATE BY THE REALTORS® ASSOCIATION OF EDMONTON. COPYRIGHT 2025 BY THE REALTORS® ASSOCIATION OF EDMONTON. ALL RIGHTS RESERVED. Trademarks are owned or controlled by the Canadian Real Estate Association (CREA) and identify real estate professionals who are members of CREA (REALTOR®, REALTORS®) and/or the quality of services they provide (MLS®, Multiple Listing Service®)

Listing information last updated on September 14th, 2025 at 12:48pm MDT