

\$649,900 - 12 Wolcott Place, St. Albert

MLS® #E4445889

\$649,900

4 Bedroom, 3.00 Bathroom, 1,886 sqft
Single Family on 0.00 Acres

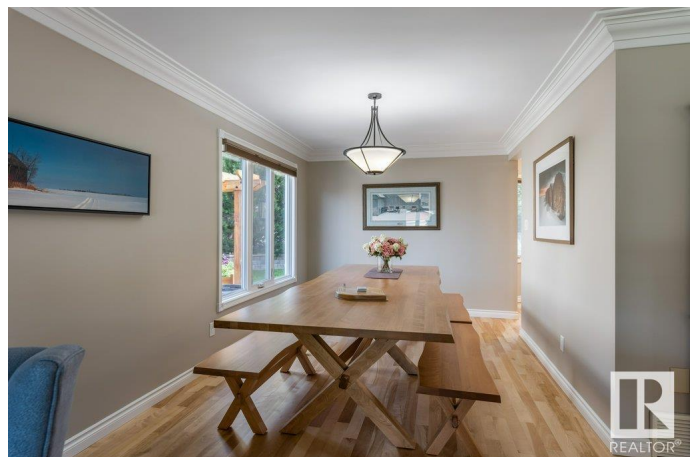
Woodlands (St. Albert), St. Albert, AB

SANCTUARY in WOODLANDS on a quiet Cul De Sac. This Renovated 1886 sqft 2st split is in a word STUNNING. Nestled among SOARING TREES the Hardy Board, brick and cobblestone accented curb appeal blend in with the natural surroundings. Upon entering the pride of ownership is apparent as you are greeted with Maple mirage floors. Renovations include: custom millwork throughout, banks of new windows, sundrenched rooms, HICKORY CABINETS throughout the granite Kitchen with subway tile backsplash, breakfast bar Island, S/S Appliances, dining nook with cobblestone patio view and extensive pantry system, built-in Murphy Bed, Mirage birch family room with feature brick Fireplace, renovated bathrooms with quartz vanities and tiled showers, 3 bedrooms including the master with large walk-in closet and oversized shower ensuite. Addition features include lower lever workout room, large den or office, cold room, in ground sprinkler, newer furnaces, and A/C, cobble stone patios & firepit. Close to parks & schoolsâ€”PERFECTION

Built in 1980

Essential Information

MLS® #	E4445889
Price	\$649,900



Bedrooms	4
Bathrooms	3.00
Full Baths	3
Square Footage	1,886
Acres	0.00
Year Built	1980
Type	Single Family
Sub-Type	Detached Single Family
Style	2 Storey
Status	Active

Community Information

Address	12 Wolcott Place
Area	St. Albert
Subdivision	Woodlands (St. Albert)
City	St. Albert
County	ALBERTA
Province	AB
Postal Code	T8N 3P2

Amenities

Amenities	Air Conditioner, Deck, Patio, Sprinkler Sys-Underground, See Remarks
Parking	Double Garage Attached

Interior

Interior Features	ensuite bathroom
Appliances	Air Conditioning-Central, Dishwasher-Built-In, Dryer, Microwave Hood Fan, Refrigerator, Stove-Electric, Washer, Window Coverings
Heating	Forced Air-1, Natural Gas
Fireplace	Yes
Fireplaces	Brick Facing, Mantel
Stories	3
Has Basement	Yes
Basement	Full, Finished

Exterior

Exterior	Wood, Brick, Hardie Board Siding
Exterior Features	Cul-De-Sac, Fenced, Fruit Trees/Shrubs, Golf Nearby, Landscaped, Playground Nearby, Public Transportation, Schools, Shopping Nearby,

	See Remarks
Roof	Asphalt Shingles
Construction	Wood, Brick, Hardie Board Siding
Foundation	Concrete Perimeter

Additional Information

Date Listed	July 4th, 2025
Days on Market	1
Zoning	Zone 24

DATA IS DEEMED RELIABLE BUT IS NOT GUARANTEED ACCURATE BY THE REALTORS® ASSOCIATION OF EDMONTON. COPYRIGHT 2025 BY THE REALTORS® ASSOCIATION OF EDMONTON. ALL RIGHTS RESERVED. Trademarks are owned or controlled by the Canadian Real Estate Association (CREA) and identify real estate professionals who are members of CREA (REALTOR®, REALTORS®) and/or the quality of services they provide (MLS®, Multiple Listing Service®)

Listing information last updated on July 5th, 2025 at 8:32am MDT