

## \$279,900 - 1201 9020 Jasper Avenue, Edmonton

MLS® #E4445848

**\$279,900**

2 Bedroom, 2.00 Bathroom, 1,322 sqft

Condo / Townhouse on 0.00 Acres

Boyle Street, Edmonton, AB

**\*\*\*6-MONTHS OF CONDO FEES INCLUDED AS PART OF SALE!!!\*\*** Welcome to Jasper Properties!!!! This CONCRETE building is located minutes away from DOWNTOWN. This spacious CORNER UNIT comes with over 1300 square feet. When entering the unit you come to open concept layout with a large living room featuring a FIREPLACE, a dining area and a kitchen with all your essential STAINLESS STEEL appliance and BREAKFAST ISLAND. . This area has engineered HARWOOD throughout. The master bedroom features an ENSUITE BATHROOM and WALK-IN CLOSET. There is a additional bedroom, FLEX SPACE/DEN and a full bathroom. Enjoy the summers on the dedicated balcony with stunning views and the convenience of a large underground parking stall. This building comes with a FITNESS ROOM and is close to all amenities including shopping, restaurants, schools, public transportation, RIVER VALLEY, ICE DISTRICT and downtown living!!!!

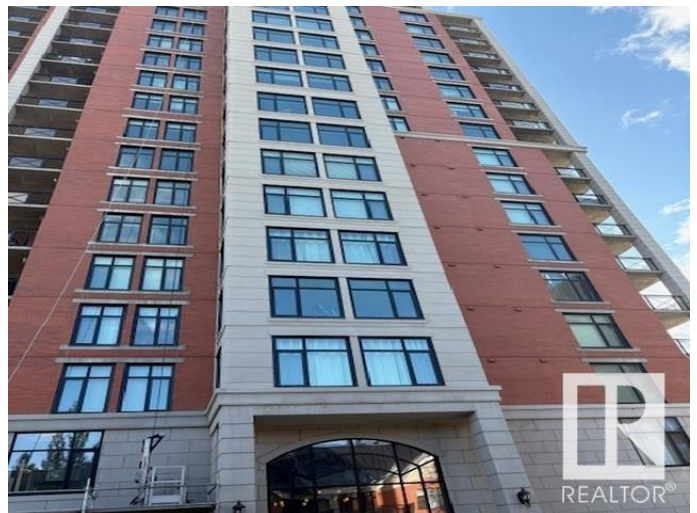
Built in 2005

### Essential Information

MLS® # E4445848

Price \$279,900

Bedrooms 2



Bathrooms	2.00
Full Baths	2
Square Footage	1,322
Acres	0.00
Year Built	2005
Type	Condo / Townhouse
Sub-Type	Apartment High Rise
Style	Single Level Apartment
Status	Active

### Community Information

Address	1201 9020 Jasper Avenue
Area	Edmonton
Subdivision	Boyle Street
City	Edmonton
County	ALBERTA
Province	AB
Postal Code	T5H 3S8

### Amenities

Amenities	Exercise Room, Intercom, Parking-Visitor, Secured Parking, Security Door, See Remarks
Parking	Underground

### Interior

Interior Features	ensuite bathroom
Appliances	Dishwasher-Built-In, Oven-Microwave, Refrigerator, Stacked Washer/Dryer, Stove-Electric
Heating	Fan Coil, Natural Gas
# of Stories	22
Stories	1
Has Basement	Yes
Basement	None, No Basement

### Exterior

Exterior	Concrete, Brick
Exterior Features	Gated Community, Golf Nearby, Playground Nearby, Public Transportation, Shopping Nearby, See Remarks
Roof	EPDM Membrane

Construction	Concrete, Brick
Foundation	Concrete Perimeter

**Additional Information**

Date Listed	July 4th, 2025
Days on Market	1
Zoning	Zone 13
Condo Fee	\$966

DATA IS DEEMED RELIABLE BUT IS NOT GUARANTEED ACCURATE BY THE REALTORS® ASSOCIATION OF EDMONTON. COPYRIGHT 2025 BY THE REALTORS® ASSOCIATION OF EDMONTON. ALL RIGHTS RESERVED.Trademarks are owned or controlled by the Canadian Real Estate Association (CREA) and identify real estate professionals who are members of CREA (REALTOR®, REALTORS®) and/or the quality of services they provide (MLS®, Multiple Listing Service®)

Listing information last updated on July 5th, 2025 at 12:32pm MDT