

## \$413,000 - 1841 28 Street, Edmonton

MLS® #E4445711

**\$413,000**

3 Bedroom, 2.50 Bathroom, 1,211 sqft  
Single Family on 0.00 Acres

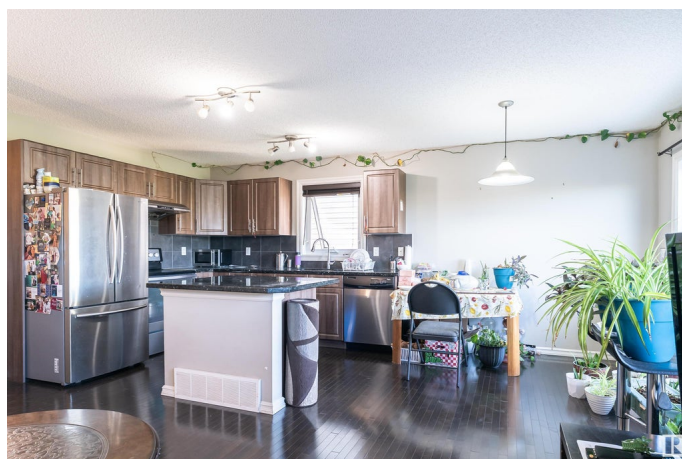
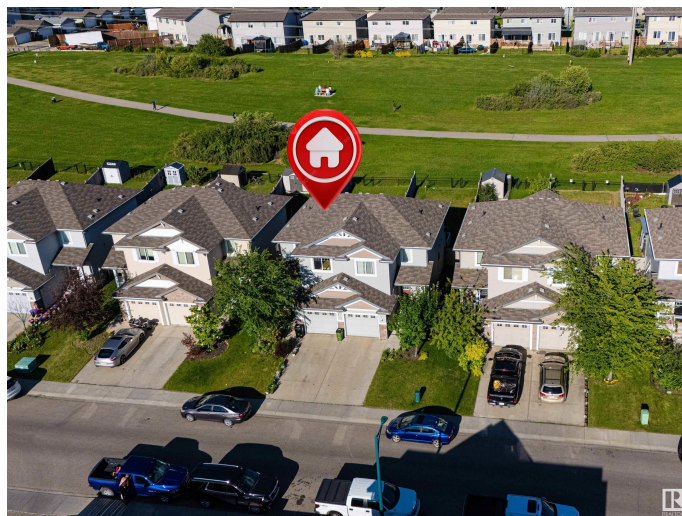
Laurel, Edmonton, AB

Welcome to this beautifully designed half duplex located in the sought-after Laurel community. This home offers a bright and open-concept layout thatâ€™s perfect for families and entertaining alike. Featuring 3 generously sized bedrooms, including a spacious primary suite, this home provides both comfort and functionality. The main floor boasts a modern kitchen with ample cabinetry, a large living area filled with natural light, and a dining space that flows seamlessly to the backyardâ€”ideal for gatherings and summer BBQs. Step outside to your private backyard, which backs onto a lush green space with a long and scenic walking trailâ€”perfect for morning strolls, evening runs, or simply enjoying nature right at your doorstep. Conveniently located, this home is close to all major amenities, including schools, shopping centers, grocery stores, and major highways, making daily errands and commuting a breeze.

Built in 2012

### Essential Information

MLS® #	E4445711
Price	\$413,000
Bedrooms	3
Bathrooms	2.50
Full Baths	2



Half Baths	1
Square Footage	1,211
Acres	0.00
Year Built	2012
Type	Single Family
Sub-Type	Half Duplex
Style	2 Storey
Status	Active

### Community Information

Address	1841 28 Street
Area	Edmonton
Subdivision	Laurel
City	Edmonton
County	ALBERTA
Province	AB
Postal Code	T6T 0N8

### Amenities

Amenities	Deck
Parking	Single Garage Attached

### Interior

Interior Features	ensuite bathroom
Appliances	Dishwasher-Built-In, Dryer, Hood Fan, Refrigerator, Stove-Electric, Washer, Window Coverings
Heating	Forced Air-1, Natural Gas
Stories	2
Has Basement	Yes
Basement	Full, Unfinished

### Exterior

Exterior	Wood, Vinyl
Exterior Features	Fenced, Landscaped, Playground Nearby, Public Swimming Pool, Public Transportation, Schools, Shopping Nearby
Roof	Asphalt Shingles
Construction	Wood, Vinyl
Foundation	Concrete Perimeter

### Additional Information

Date Listed July 3rd, 2025

Days on Market 2

Zoning Zone 30

DATA IS DEEMED RELIABLE BUT IS NOT GUARANTEED ACCURATE BY THE REALTORS® ASSOCIATION OF EDMONTON. COPYRIGHT 2025 BY THE REALTORS® ASSOCIATION OF EDMONTON. ALL RIGHTS RESERVED. Trademarks are owned or controlled by the Canadian Real Estate Association (CREA) and identify real estate professionals who are members of CREA (REALTOR®, REALTORS®) and/or the quality of services they provide (MLS®, Multiple Listing Service®)

Listing information last updated on July 5th, 2025 at 6:32pm MDT