

\$494,400 - 17903 87a Avenue, Edmonton

MLS® #E4445704

\$494,400

4 Bedroom, 2.50 Bathroom, 1,307 sqft

Single Family on 0.00 Acres

Belmead, Edmonton, AB

Welcome to this beautiful bungalow in the desirable, family-friendly community of Belmead! Step inside to discover a bright and spacious main floor featuring a cozy living room with a charming built-in fireplace, a functional kitchen with plenty of cabinetry, and a dedicated dining area perfect for gathering with loved ones. The primary bedroom offers a private 2-piece ensuite, while two additional bedrooms and a full 4-piece bathroom complete the main level. Downstairs, the fully finished basement expands your living space with a large rec room, a built-in bar for entertaining, an additional bedroom, a 3-piece bathroom, and a laundry room with storage. Outside, you'll find beautifully manicured landscaping that transforms your backyard into a tranquil oasis—ideal for relaxing, gardening, or hosting summer BBQs. A double detached garage and large lot add even more value. Conveniently located just minutes from West Edmonton Mall, schools, parks, and public transit!

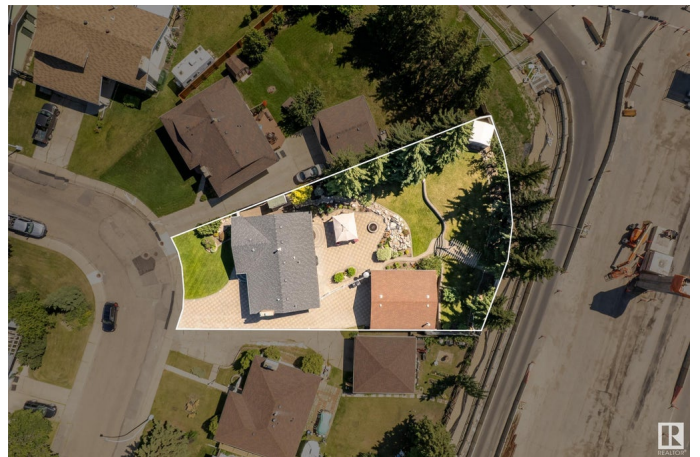
Built in 1975

Essential Information

MLS® # E4445704

Price \$494,400

Bedrooms 4



Bathrooms	2.50
Full Baths	2
Half Baths	1
Square Footage	1,307
Acres	0.00
Year Built	1975
Type	Single Family
Sub-Type	Detached Single Family
Style	Bungalow
Status	Active

Community Information

Address	17903 87a Avenue
Area	Edmonton
Subdivision	Belmead
City	Edmonton
County	ALBERTA
Province	AB
Postal Code	T5T 0Z3

Amenities

Amenities	Off Street Parking, On Street Parking, Detectors Smoke, Fire Pit, Vinyl Windows
Parking	Double Garage Detached

Interior

Interior Features	ensuite bathroom
Appliances	Dishwasher-Built-In, Dryer, Hood Fan, Oven-Microwave, Refrigerator, Washer, Window Coverings, Stoves-Two
Heating	Forced Air-1, Natural Gas
Stories	2
Has Basement	Yes
Basement	Full, Finished

Exterior

Exterior	Wood, Composition, Hardie Board Siding
Exterior Features	Cul-De-Sac, Fenced, Flat Site, Landscaped, Level Land, No Back Lane, Park/Reserve, Public Transportation, Schools, Shopping Nearby
Roof	Asphalt Shingles

Construction	Wood, Composition, Hardie Board Siding
Foundation	Concrete Perimeter

Additional Information

Date Listed	July 3rd, 2025
Days on Market	1
Zoning	Zone 20

DATA IS DEEMED RELIABLE BUT IS NOT GUARANTEED ACCURATE BY THE REALTORS® ASSOCIATION OF EDMONTON. COPYRIGHT 2025 BY THE REALTORS® ASSOCIATION OF EDMONTON. ALL RIGHTS RESERVED.Trademarks are owned or controlled by the Canadian Real Estate Association (CREA) and identify real estate professionals who are members of CREA (REALTOR®, REALTORS®) and/or the quality of services they provide (MLS®, Multiple Listing Service®)

Listing information last updated on July 4th, 2025 at 4:48pm MDT