

# \$478,415 - 13137 214 Street, Edmonton

MLS® #E4445437

**\$478,415**

4 Bedroom, 3.00 Bathroom, 1,296 sqft

Single Family on 0.00 Acres

Trumpeter Area, Edmonton, AB

**NO CONDO FEES and AMAZING VALUE!**

You read that right welcome to this brand new townhouse unit the "Bryce" Built by the award winning builder Pacesetter homes and is located in one of North West Edmonton's nicest communities of Trumpeter at Big Lake. With over 1295 square Feet, this opportunity is perfect for a young family or young couple.

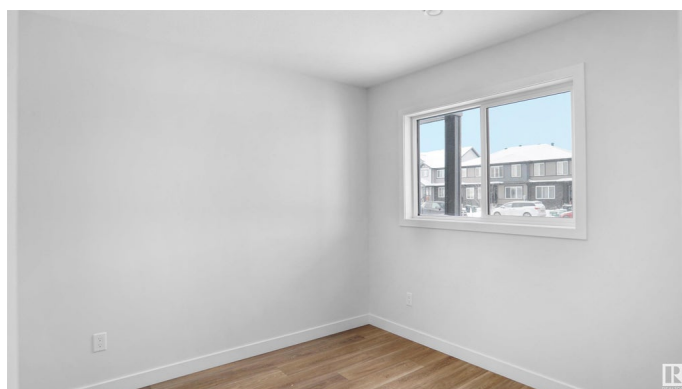
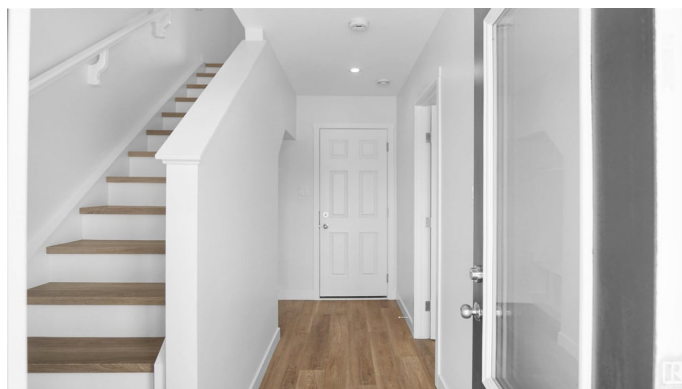
Your main floor as you enter has a flex room/ Bedroom that is next to the entrance from the garage with a 3 piece bath. The second level has a beautiful kitchen with upgraded cabinets, upgraded counter tops and a tile back splash with upgraded luxury Vinyl plank flooring throughout the great room. The upper level has 3 bedrooms and 2 bathrooms. This home also comes completed with front and back landscaping and a attached garage. \*\*\*

Photo used is of an artist rendering , home is under construction and will be complete by February 20 2026 colors may vary \*\*\*

Built in 2025

## Essential Information

|            |           |
|------------|-----------|
| MLS® #     | E4445437  |
| Price      | \$478,415 |
| Bedrooms   | 4         |
| Bathrooms  | 3.00      |
| Full Baths | 3         |



|                |               |
|----------------|---------------|
| Square Footage | 1,296         |
| Acres          | 0.00          |
| Year Built     | 2025          |
| Type           | Single Family |
| Sub-Type       | Half Duplex   |
| Style          | 2 Storey      |
| Status         | Active        |

### **Community Information**

|             |                  |
|-------------|------------------|
| Address     | 13137 214 Street |
| Area        | Edmonton         |
| Subdivision | Trumpeter Area   |
| City        | Edmonton         |
| County      | ALBERTA          |
| Province    | AB               |
| Postal Code | T5S 0T7          |

### **Amenities**

|           |                        |
|-----------|------------------------|
| Amenities | See Remarks            |
| Parking   | Double Garage Attached |

### **Interior**

|                   |  |
|-------------------|--|
| Interior Features | ensuite bathroom                           |
| Appliances        | Garage Control, Garage Opener, See Remarks |
| Heating           | Forced Air-1, Natural Gas                  |
| Stories           | 2  |
| Has Basement      | Yes  |
| Basement          | None, No Basement                          |

### **Exterior**

|                   |  |
|-------------------|--|
| Exterior          | Wood, Stone, Vinyl   |
| Exterior Features | Golf Nearby, Park/Reserve, Playground Nearby, Public Swimming Pool, Public Transportation, Schools, Shopping Nearby, See Remarks |
| Roof              | Asphalt Shingles   |
| Construction      | Wood, Stone, Vinyl   |
| Foundation        | Concrete Perimeter   |

### **Additional Information**

|             |                |
|-------------|----------------|
| Date Listed | July 1st, 2025 |
|-------------|----------------|

Days on Market 78

Zoning Zone 59

DATA IS DEEMED RELIABLE BUT IS NOT GUARANTEED ACCURATE BY THE REALTORS® ASSOCIATION OF EDMONTON. COPYRIGHT 2025 BY THE REALTORS® ASSOCIATION OF EDMONTON. ALL RIGHTS RESERVED. Trademarks are owned or controlled by the Canadian Real Estate Association (CREA) and identify real estate professionals who are members of CREA (REALTOR®, REALTORS®) and/or the quality of services they provide (MLS®, Multiple Listing Service®)

Listing information last updated on September 17th, 2025 at 5:17am MDT