

\$489,997 - 1006 Moyer Drive, Sherwood Park

MLS® #E4445234

\$489,997

4 Bedroom, 2.50 Bathroom, 1,280 sqft

Single Family on 0.00 Acres

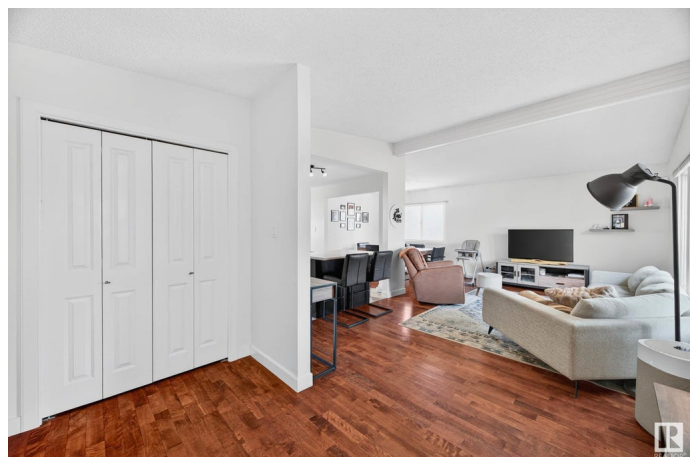
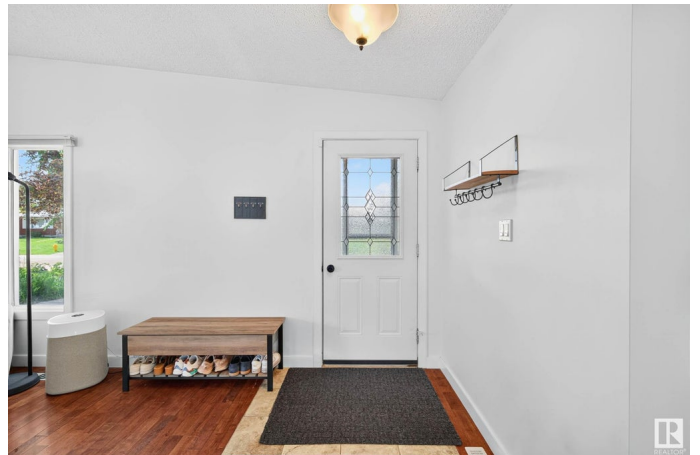
Westboro, Sherwood Park, AB

Welcome Home! This beautiful renovated bungalow boasts a spacious yard and double detached garage with tons of character! Located in the sought after neighborhood of Westboro, this family home is walking distance from two schools, playgrounds, and a large green space. The main living area is bright and spacious with beautiful vaulted ceilings. The kitchen is renovated and opened up to the living and dining rooms with a functional island in the middle. The primary bedroom comes with a half bath ensuite and his/hers closets. The main floor also has two other bedrooms with an updated 5pce bath. The lower level is a fully finished large basement that boasts a beautiful brick feature wall, modern bathroom, another bedroom and an office/storage room. In the backyard is a large grassy area beside the double detached garage, along with a stone patio perfect for dinners outside in the summer evenings!

Built in 1970

Essential Information

MLS® #	E4445234
Price	\$489,997
Bedrooms	4
Bathrooms	2.50
Full Baths	2



Half Baths	1
Square Footage	1,280
Acres	0.00
Year Built	1970
Type	Single Family
Sub-Type	Detached Single Family
Style	Bungalow
Status	Active

Community Information

Address	1006 Moyer Drive
Area	Sherwood Park
Subdivision	Westboro
City	Sherwood Park
County	ALBERTA
Province	AB
Postal Code	T8A 1E6

Amenities

Amenities	Patio
Parking Spaces	5
Parking	Double Garage Detached

Interior

Interior Features	ensuite bathroom
Appliances	Dishwasher-Built-In, Dryer, Garage Control, Garage Opener, Microwave Hood Fan, Refrigerator, Stove-Electric, Washer, Window Coverings
Heating	Forced Air-1, Natural Gas
Stories	2
Has Basement	Yes
Basement	Full, Finished

Exterior

Exterior	Wood, Brick, Vinyl
Exterior Features	Fenced, Golf Nearby, Landscaped, Playground Nearby, Public Transportation, Schools, Shopping Nearby
Roof	Asphalt Shingles
Construction	Wood, Brick, Vinyl
Foundation	Concrete Perimeter

Additional Information

Date Listed July 2nd, 2025
Days on Market 2
Zoning Zone 25

DATA IS DEEMED RELIABLE BUT IS NOT GUARANTEED ACCURATE BY THE REALTORS® ASSOCIATION OF EDMONTON. COPYRIGHT 2025 BY THE REALTORS® ASSOCIATION OF EDMONTON. ALL RIGHTS RESERVED.Trademarks are owned or controlled by the Canadian Real Estate Association (CREA) and identify real estate professionals who are members of CREA (REALTOR®, REALTORS®) and/or the quality of services they provide (MLS®, Multiple Listing Service®)
Listing information last updated on July 3rd, 2025 at 9:47pm MDT