

\$449,000 - 1142 South Creek Wynd, Stony Plain

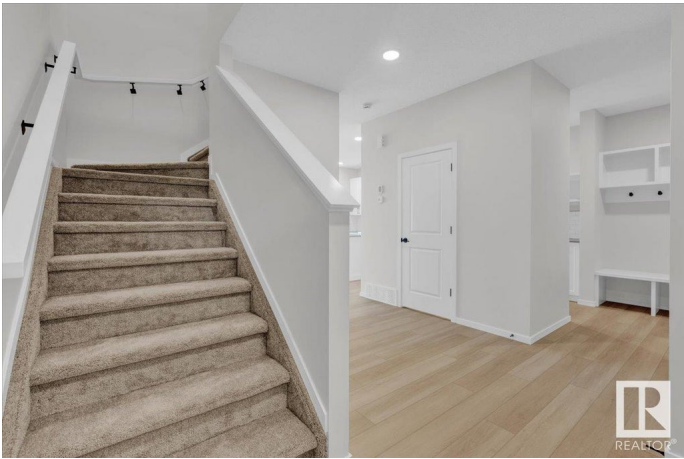
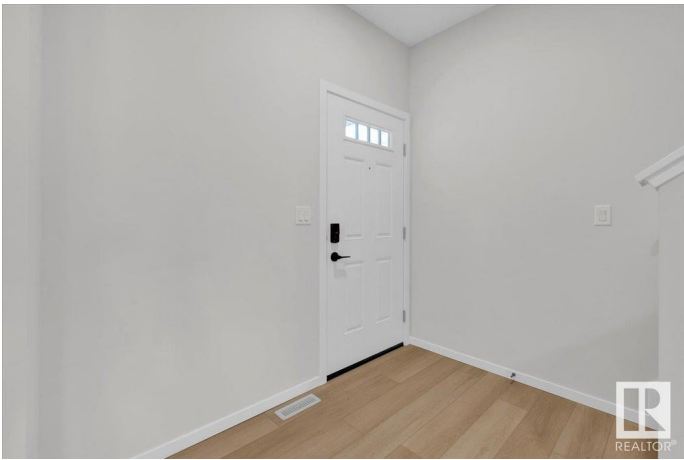
MLS® #E4445131

\$449,000

3 Bedroom, 2.50 Bathroom, 1,704 sqft
Single Family on 0.00 Acres

South Creek, Stony Plain, AB

5 Things to Love About This Home: 1) Modern Layout – This brand new 2-storey half duplex offers open-concept living with a spacious main floor that seamlessly connects the kitchen, dining, and living areas. 2) Dream Kitchen – Cook and entertain with ease thanks to the central island with breakfast bar, pantry, and sleek finishes throughout. 3) Smart Design – Thoughtful touches like a mudroom with built-in bench and cubbies, upper-level laundry, and a versatile bonus room make everyday living effortless. 4) Relaxing Retreat – The spacious primary suite features a walk-in closet and luxurious 5-piece ensuite with dual sinks. 5) Prime Location – Nestled near the Stony Plain Golf Course, parks, schools, and all amenities, this home blends suburban comfort with everyday convenience. *Photos are representative*



Built in 2025

Essential Information

MLS® #	E4445131
Price	\$449,000
Bedrooms	3
Bathrooms	2.50
Full Baths	2
Half Baths	1
Square Footage	1,704

Acres	0.00
Year Built	2025
Type	Single Family
Sub-Type	Half Duplex
Style	2 Storey
Status	Active

Community Information

Address	1142 South Creek Wynd
Area	Stony Plain
Subdivision	South Creek
City	Stony Plain
County	ALBERTA
Province	AB
Postal Code	T7Z 0J9

Amenities

Amenities	Exterior Walls- 2"x6", No Animal Home, No Smoking Home
Parking	Double Garage Attached

Interior

Interior Features	ensuite bathroom
Appliances	Dishwasher-Built-In, Microwave Hood Fan, Refrigerator, Stove-Electric
Heating	Forced Air-1, Natural Gas
Fireplace	Yes
Fireplaces	Insert
Stories	2
Has Basement	Yes
Basement	Full, Unfinished

Exterior

Exterior	Wood, Vinyl
Exterior Features	Golf Nearby, Park/Reserve, Playground Nearby, Schools, Shopping Nearby
Roof	Asphalt Shingles
Construction	Wood, Vinyl
Foundation	Concrete Perimeter

Additional Information

Date Listed June 30th, 2025

Days on Market 3

Zoning Zone 91

DATA IS DEEMED RELIABLE BUT IS NOT GUARANTEED ACCURATE BY THE REALTORS® ASSOCIATION OF EDMONTON. COPYRIGHT 2025 BY THE REALTORS® ASSOCIATION OF EDMONTON. ALL RIGHTS RESERVED. Trademarks are owned or controlled by the Canadian Real Estate Association (CREA) and identify real estate professionals who are members of CREA (REALTOR®, REALTORS®) and/or the quality of services they provide (MLS®, Multiple Listing Service®)

Listing information last updated on July 3rd, 2025 at 9:17pm MDT