

# **\$280,000 - 33 59316 Range Rd 54, Rural Barrhead County**

MLS® #E4445048

**\$280,000**

3 Bedroom, 2.00 Bathroom, 1,221 sqft

Rural on 1.22 Acres

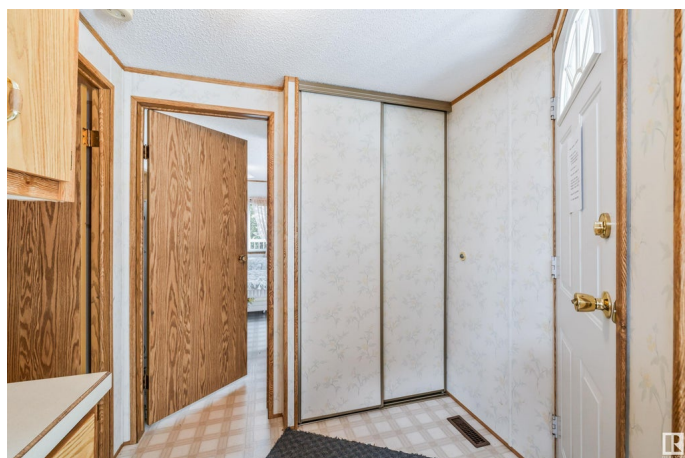
Summer Lea, Rural Barrhead County, AB

WELCOME TO SUMMER LEA! This 3 bedroom bungalow is located just minutes away from Thunder Lake Provincial Park and one of the nicest golf courses in Alberta! The home sits on a DOUBLE LOT and features 3 bedrooms, 2 ensuites, a large country kitchen with vaulted ceilings, skylight and bright living room. The VERY PRIVATE exterior has a WEST facing, wrap around two-tiered deck with maintenance free railings and 3 sheds! The setting is absolutely gorgeous, surrounded by trees and offering lots of quad trails and a club house for entertaining. Enjoy country living with all the amenities of town just 15 minutes away. A great change of pace!

Built in 1991

## **Essential Information**

MLS® #	E4445048
Price	\$280,000
Bedrooms	3
Bathrooms	2.00
Full Baths	2
Square Footage	1,221
Acres	1.22
Year Built	1991
Type	Rural



Sub-Type	Detached Single Family
Style	Bungalow
Status	Active

### Community Information

Address	33 59316 Range Rd 54
Area	Rural Barrhead County
Subdivision	Summer Lea
City	Rural Barrhead County
County	ALBERTA
Province	AB
Postal Code	T7N 1N3

### Amenities

Features	Club House, Deck, Detectors Smoke, Skylight, Vaulted Ceiling
----------	--

### Interior

Interior Features	ensuite bathroom
Heating	Forced Air-1, Natural Gas
Stories	1
Has Basement	Yes
Basement	None, No Basement

### Exterior

Exterior	Wood
Exterior Features	Backs Onto Park/Trees, Low Maintenance Landscape, Private Setting, See Remarks
Construction	Wood
Foundation	Block

### Additional Information

Date Listed	June 30th, 2025
Days on Market	58
Zoning	Zone 70
Condo Fee	\$150

DATA IS DEEMED RELIABLE BUT IS NOT GUARANTEED ACCURATE BY THE REALTORS® ASSOCIATION OF EDMONTON. COPYRIGHT 2025 BY THE REALTORS® ASSOCIATION OF EDMONTON. ALL RIGHTS RESERVED. Trademarks are owned or controlled by the Canadian Real Estate Association (CREA) and identify real estate professionals who are members of CREA (REALTOR®, REALTORS®) and/or the quality of services they provide (MLS®, Multiple Listing Service®)

Listing information last updated on August 27th, 2025 at 3:02am MDT