

# **\$250,000 - 287 Lakeshore Drive, Rural Lac Ste. Anne County**

MLS® #E4444758

**\$250,000**

1 Bedroom, 1.00 Bathroom, 934 sqft

Rural on 0.20 Acres

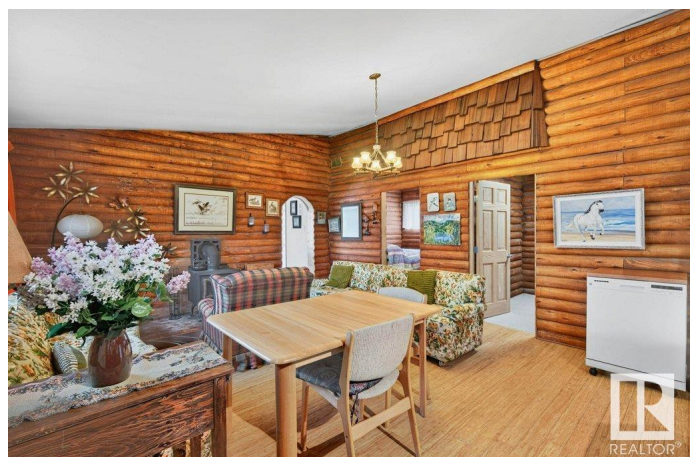
Sandy Beach, Rural Lac Ste. Anne County, AB

Welcome to this charming lakeside retreat on the serene shores of Sandy Beach. This delightful home offers the perfect blend of comfort and tranquility, with numerous recent upgrades including a new roof and pressure pump (2023), as well as eaves and soffits (2018). Inside, you'll find bamboo and hardwood flooring, a versatile flex roomâ€”previously used as a second bedroomâ€”adding extra functionality to the layout, and a wood-burning fireplace/heater that brings warmth and coziness to those relaxing nights by the fire. Start your day with coffee while listening to nature surrounded by mature trees. In the evening unwind as you roast marshmallows over the fire pit watching the sunset over the water. This property truly gives you the outdoor Alberta lifestyle.

Built in 1958

## **Essential Information**

MLS® #	E4444758
Price	\$250,000
Bedrooms	1
Bathrooms	1.00
Full Baths	1



Square Footage	934
Acres	0.20
Year Built	1958
Type	Rural
Sub-Type	Detached Single Family
Style	Bungalow
Status	Active

### **Community Information**

Address	287 Lakeshore Drive
Area	Rural Lac Ste. Anne County
Subdivision	Sandy Beach
City	Rural Lac Ste. Anne County
County	ALBERTA
Province	AB
Postal Code	T0E 1V0

### **Amenities**

Features	Off Street Parking, Crawl Space, Deck, Fire Pit, Vinyl Windows
----------	--

### **Interior**

Heating	Forced Air-1, Natural Gas
Fireplace	Yes
Stories	1
Has Basement	Yes
Basement	None, No Basement

### **Exterior**

Exterior	Wood
Exterior Features	Backs Onto Lake, Fenced, Lake View, Playground Nearby, Private Setting, Waterfront Property
Construction	Wood
Foundation	Block

### **Additional Information**

Date Listed	June 27th, 2025
Days on Market	61
Zoning	Zone 74

DATA IS DEEMED RELIABLE BUT IS NOT GUARANTEED ACCURATE BY THE REALTORS® ASSOCIATION OF

EDMONTON. COPYRIGHT 2025 BY THE REALTORS® ASSOCIATION OF EDMONTON. ALL RIGHTS RESERVED.Trademarks are owned or controlled by the Canadian Real Estate Association (CREA) and identify real estate professionals who are members of CREA (REALTOR®, REALTORS®) and/or the quality of services they provide (MLS®, Multiple Listing Service®)

Listing information last updated on August 27th, 2025 at 11:02am MDT