

## \$425,000 - 68 South Creek Wynd, Stony Plain

MLS® #E4444390

**\$425,000**

3 Bedroom, 3.50 Bathroom, 1,572 sqft

Single Family on 0.00 Acres

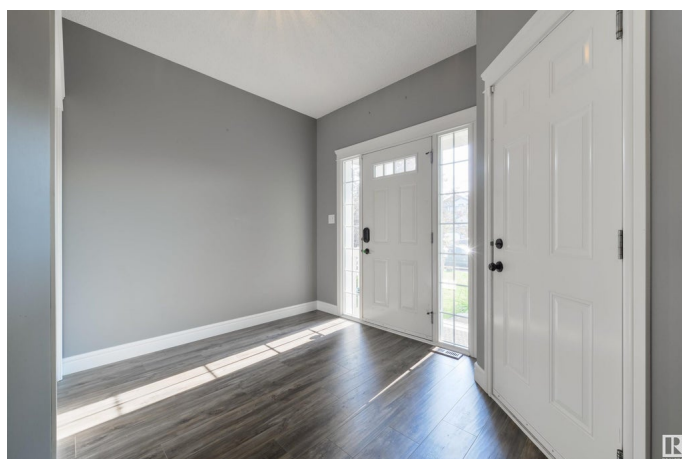
South Creek, Stony Plain, AB

NO REAR NEIGHBOURS & WEST-FACING VIEWS! Situated in the desirable South Creek community, this beautifully updated half duplex offers the perfect blend of comfort and convenience. Youâ€™ll love the bright & open main floor featuring stylish vinyl plank flooring, a modern kitchen with white cabinetry, center island, corner pantry, and spacious dinette, and a cozy living room with a gas fireplace. Upstairs showcases 3 generous-sized bedrooms including a king-sized ownerâ€™s suite with French doors, walk-in closet, and 4pc ensuite, as well as convenient top-floor laundry. The fully finished basement adds even more living space, while central A/C keeps you cool year-round. Outside, youâ€™ll find the yard is fully landscaped & fenced, with a full-width deck, and a peaceful TREED backdrop! Just steps from scenic walking trails, parks, and the Stony Plain Golf Course, the location here is tough to beat!

Built in 2013

### Essential Information

MLS® #	E4444390
Price	\$425,000
Bedrooms	3
Bathrooms	3.50
Full Baths	3



Half Baths	1
Square Footage	1,572
Acres	0.00
Year Built	2013
Type	Single Family
Sub-Type	Half Duplex
Style	2 Storey
Status	Active

### **Community Information**

Address	68 South Creek Wynd
Area	Stony Plain
Subdivision	South Creek
City	Stony Plain
County	ALBERTA
Province	AB
Postal Code	T7Z 0E1

### **Amenities**

Amenities	Air Conditioner, Deck, No Animal Home, No Smoking Home, See Remarks
Parking	Single Garage Attached

### **Interior**

Interior Features	ensuite bathroom
Appliances	Dishwasher-Built-In, Dryer, Garage Control, Garage Opener, Hood Fan, Refrigerator, Storage Shed, Stove-Electric, Washer, Window Coverings
Heating	Forced Air-1, Natural Gas
Fireplace	Yes
Fireplaces	See Remarks
Stories	3
Has Basement	Yes
Basement	Full, Finished

### **Exterior**

Exterior	Wood, Vinyl
Exterior Features	Backs Onto Park/Trees, Fenced, Flat Site, Golf Nearby, Landscaped, Playground Nearby, Schools, Shopping Nearby, See Remarks
Roof	Asphalt Shingles

Construction	Wood, Vinyl
Foundation	Concrete Perimeter

**Additional Information**

Date Listed	June 26th, 2025
Days on Market	8
Zoning	Zone 91

DATA IS DEEMED RELIABLE BUT IS NOT GUARANTEED ACCURATE BY THE REALTORS® ASSOCIATION OF EDMONTON. COPYRIGHT 2025 BY THE REALTORS® ASSOCIATION OF EDMONTON. ALL RIGHTS RESERVED.Trademarks are owned or controlled by the Canadian Real Estate Association (CREA) and identify real estate professionals who are members of CREA (REALTOR®, REALTORS®) and/or the quality of services they provide (MLS®, Multiple Listing Service®)

Listing information last updated on July 4th, 2025 at 6:47am MDT