

\$319,900 - 117 150 Edwards Drive, Edmonton

MLS® #E4444363

\$319,900

3 Bedroom, 1.50 Bathroom, 1,235 sqft

Condo / Townhouse on 0.00 Acres

Ellerslie, Edmonton, AB

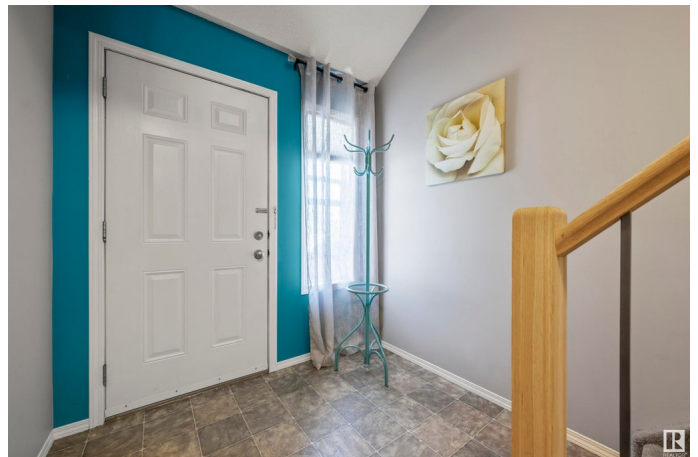
Welcome to this CHARMING updated,end unit townhome,perfectly situated in a quiet complex.From the moment you walk in,you will fall in love!The bright living room offers lots of natural light from the many windows+a sliding door to the private patio+green space.The updated kitchen has two toned oak cabinets,stainless/black appliances+separate dining area.The main floor is complete with a 2pc bath+entrance to the single garage.Upstairs you will find a large primary bedroom(w/walk-in closet);two more good sized bedrooms+a beautifully renovated 4pc bath(new vanity,quartz,flooring+subway tile).Your movie nights just got better in the basement's "theatre" room complete with projector, screen+speakers.Completing the basement is laundry+storage. Upgrades:Fridge,Chandelier Light Fixtures,Laminate,Under Cabinet Lighting,Taps,Toilets,Work Bench,Oversized Driveway,Paint...The list is endless!Walking distance to parks,schools,transit,shopping,restaurants+a quick drive to major freeways+the airport.Move in + enjoy!

Built in 2005

Essential Information

MLS® #

E4444363



Price	\$319,900
Bedrooms	3
Bathrooms	1.50
Full Baths	1
Half Baths	1
Square Footage	1,235
Acres	0.00
Year Built	2005
Type	Condo / Townhouse
Sub-Type	Townhouse
Style	2 Storey
Status	Active

Community Information

Address	117 150 Edwards Drive
Area	Edmonton
Subdivision	Ellerslie
City	Edmonton
County	ALBERTA
Province	AB
Postal Code	T6X 1M4

Amenities

Amenities	Parking-Visitor, Storage-In-Suite, See Remarks
Parking Spaces	3
Parking	Single Garage Attached

Interior

Appliances	Dishwasher-Built-In, Dryer, Microwave Hood Fan, Refrigerator, Stove-Electric, Washer, Window Coverings, See Remarks, Projector
Heating	Forced Air-1, Natural Gas
Stories	3
Has Basement	Yes
Basement	Full, Finished

Exterior

Exterior	Wood, Vinyl
Exterior Features	Airport Nearby, Corner Lot, Flat Site, Landscaped, Low Maintenance Landscape, No Through Road, Park/Reserve, Playground Nearby,

Public Transportation, Schools, Shopping Nearby, Partially Fenced

Roof	Asphalt Shingles
Construction	Wood, Vinyl
Foundation	Concrete Perimeter

School Information

Elementary	Sakaw School
Middle	kisÅªwÅ«tisiwin School
High	J. Percy School

Additional Information

Date Listed	June 26th, 2025
Days on Market	6
Zoning	Zone 53
Condo Fee	\$245

DATA IS DEEMED RELIABLE BUT IS NOT GUARANTEED ACCURATE BY THE REALTORS® ASSOCIATION OF EDMONTON. COPYRIGHT 2025 BY THE REALTORS® ASSOCIATION OF EDMONTON. ALL RIGHTS RESERVED.Trademarks are owned or controlled by the Canadian Real Estate Association (CREA) and identify real estate professionals who are members of CREA (REALTOR®, REALTORS®) and/or the quality of services they provide (MLS®, Multiple Listing Service®)

Listing information last updated on July 2nd, 2025 at 9:03am MDT