

\$582,250 - 8607 181 Avenue, Edmonton

MLS® #E4444127

\$582,250

4 Bedroom, 3.00 Bathroom, 1,995 sqft

Single Family on 0.00 Acres

Klarvatten, Edmonton, AB

The Apex is a four-bedroom home designed for comfort and modern living. With a double attached garage, 9 ft ceilings on the main floor, a separate side entrance, and Luxury Vinyl Plank flooring throughout, it balances durability and style. The foyer opens to a full 3-piece bath with stand-up shower and a rear bedroom. A mudroom off the foyer connects to the garage man door. The open-concept kitchen, nook, and great room offer large windows and a patio door to the backyard. The kitchen features quartz countertops, a flush island eating ledge, undermount sink, over-the-range microwave, soft-close cabinets, and a walk-in pantry. Upstairs, the bright primary suite includes a 5-piece ensuite with double sinks, tub, walk-in shower with glass doors, and a spacious walk-in closet. A central bonus room, 3-piece main bath, laundry room, and two more bedrooms with ample closet space complete the upper level. Basement rough-in plumbing and Sterlingâ€™s new Signature Specification are included.

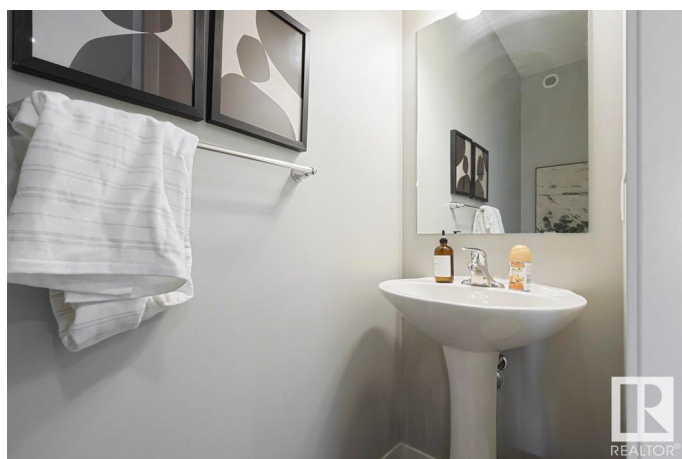
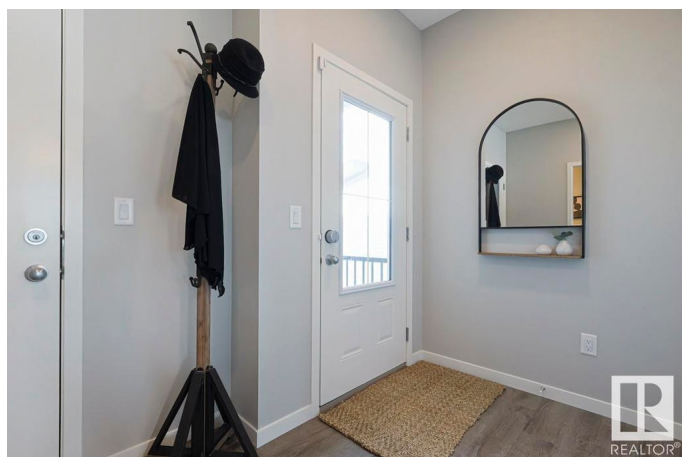
Built in 2025

Essential Information

MLS® # E4444127

Price \$582,250

Bedrooms 4



Bathrooms	3.00
Full Baths	3
Square Footage	1,995
Acres	0.00
Year Built	2025
Type	Single Family
Sub-Type	Detached Single Family
Style	2 Storey
Status	Active

Community Information

Address	8607 181 Avenue
Area	Edmonton
Subdivision	Klarvatten
City	Edmonton
County	ALBERTA
Province	AB
Postal Code	T5Z 0X1

Amenities

Amenities	Ceiling 9 ft., Detectors Smoke, No Animal Home, No Smoking Home, Smart/Program. Thermostat, Television Connection, 9 ft. Basement Ceiling
Parking	Parking Pad Cement/Paved, Rear Drive Access

Interior

Interior Features	ensuite bathroom
Appliances	Garage Control, Garage Opener, None
Heating	Forced Air-1, Natural Gas
Fireplace	Yes
Fireplaces	Tile Surround
Stories	2
Has Basement	Yes
Basement	Full, Unfinished

Exterior

Exterior	Wood, Vinyl
Exterior Features	No Through Road, Playground Nearby, Public Transportation, Schools, Shopping Nearby

Roof	Asphalt Shingles
Construction	Wood, Vinyl
Foundation	Concrete Perimeter

Additional Information

Date Listed	June 24th, 2025
Days on Market	10
Zoning	Zone 28

DATA IS DEEMED RELIABLE BUT IS NOT GUARANTEED ACCURATE BY THE REALTORS® ASSOCIATION OF EDMONTON. COPYRIGHT 2025 BY THE REALTORS® ASSOCIATION OF EDMONTON. ALL RIGHTS RESERVED.Trademarks are owned or controlled by the Canadian Real Estate Association (CREA) and identify real estate professionals who are members of CREA (REALTOR®, REALTORS®) and/or the quality of services they provide (MLS®, Multiple Listing Service®)

Listing information last updated on July 4th, 2025 at 1:17pm MDT