

# \$47,800 - 6 Twp Rd 460, Rural Wetaskiwin County

MLS® #E4444124

**\$47,800**

0 Bedroom, 0.00 Bathroom,  
Rural on 0.14 Acres

Summerhaven, Rural Wetaskiwin County, AB

Vacant lot in Summer Haven subdivision near Bear Lake. Convenient access to the Queen E 2 Highway, and a short drive to Wetaskiwin, Leduc, or Pigeon Lake. Ideal for RV enthusiasts or as a future building site. Uncover the potential at this incredibly affordable price.

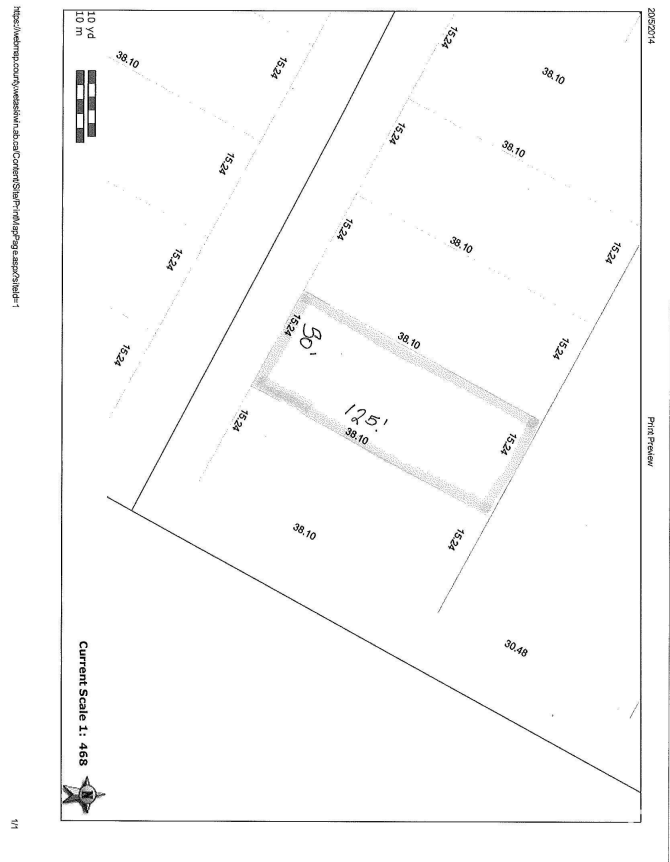
## Essential Information

MLS® #	E4444124
Price	\$47,800
Bathrooms	0.00
Acres	0.14
Type	Rural
Sub-Type	Vacant Lot/Land
Status	Active

## Community Information

Address	6 Twp Rd 460
Area	Rural Wetaskiwin County
Subdivision	Summerhaven
City	Rural Wetaskiwin County
County	ALBERTA
Province	AB
Postal Code	T0C 1H0

## Exterior



Exterior Features    Not Landscaped

**Additional Information**

Date Listed                June 24th, 2025  
Days on Market        10  
Zoning                      Zone 80

DATA IS DEEMED RELIABLE BUT IS NOT GUARANTEED ACCURATE BY THE REALTORS® ASSOCIATION OF EDMONTON. COPYRIGHT 2025 BY THE REALTORS® ASSOCIATION OF EDMONTON. ALL RIGHTS RESERVED.Trademarks are owned or controlled by the Canadian Real Estate Association (CREA) and identify real estate professionals who are members of CREA (REALTOR®, REALTORS®) and/or the quality of services they provide (MLS®, Multiple Listing Service®)  
Listing information last updated on July 4th, 2025 at 4:03pm MDT