

\$630,000 - 4 53503 Range Road 175, Rural Yellowhead

MLS® #E4444058

\$630,000

6 Bedroom, 3.50 Bathroom, 2,700 sqft

Rural on 7.93 Acres

None, Rural Yellowhead, AB

This 6 bedroom, 3.5 baths, big bonus room and 2 dens home built on a 7.93 acres less than 10 mins from Edson. This home offers comfort and tranquility with the modern features in it.

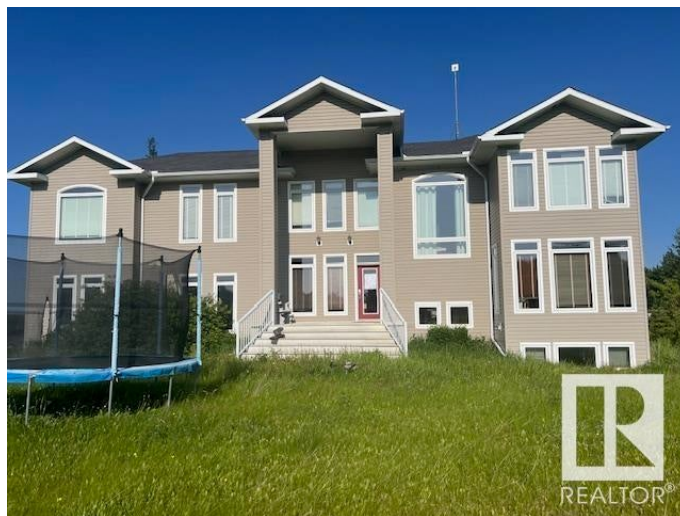
Built in 2005

Essential Information

MLS® #	E4444058
Price	\$630,000
Bedrooms	6
Bathrooms	3.50
Full Baths	3
Half Baths	1
Square Footage	2,700
Acres	7.93
Year Built	2005
Type	Rural
Sub-Type	Detached Single Family
Style	2 Storey
Status	Active

Community Information

Address	4 53503 Range Road 175
Area	Rural Yellowhead
Subdivision	None
City	Rural Yellowhead



County	ALBERTA
Province	AB
Postal Code	T7E 3L7

Amenities

Features	See Remarks
Parking Spaces	2

Interior

Interior Features	ensuite bathroom
Heating	See Remarks
Stories	3
Has Basement	Yes
Basement	Full, Finished

Exterior

Exterior	Wood
Exterior Features	Flat Site, Not Fenced, Paved Lane, See Remarks
Construction	Wood
Foundation	Concrete Perimeter

Additional Information

Date Listed	June 24th, 2025
Days on Market	11
Zoning	Zone 70

DATA IS DEEMED RELIABLE BUT IS NOT GUARANTEED ACCURATE BY THE REALTORS® ASSOCIATION OF EDMONTON. COPYRIGHT 2025 BY THE REALTORS® ASSOCIATION OF EDMONTON. ALL RIGHTS RESERVED. Trademarks are owned or controlled by the Canadian Real Estate Association (CREA) and identify real estate professionals who are members of CREA (REALTOR®, REALTORS®) and/or the quality of services they provide (MLS®, Multiple Listing Service®)

Listing information last updated on July 5th, 2025 at 7:17pm MDT