

\$1,215,000 - 43 26409 Twp Rd 532 A, Rural Parkland County

MLS® #E4443631

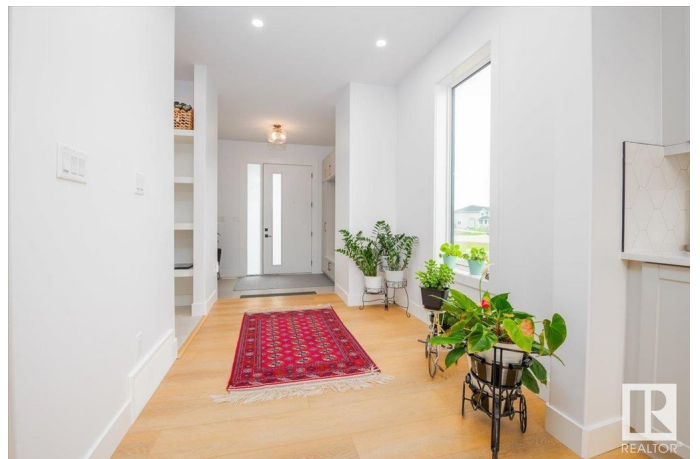
\$1,215,000

6 Bedroom, 4.00 Bathroom, 3,088 sqft

Rural on 1.00 Acres

Spring Meadow Estates, Rural Parkland County, AB

Welcome to Spring Meadows Estates. This beautiful newly build home sitting in a corner lot it's a 2 story with a triple attached garage, 6 bedrooms and 4 full bathrooms. The main floor greets you with an open space with luxurious finishes throughout and extensive natural light. The kitchen it's blend of modern and high end design, with stainless steel appliances, quartz counter tops and walk in pantry, flowing into a fire place centered living room with large windows and high ceiling. The spacious main floor also contains a dining room connecting to a large deck, a bedroom, a 4 pc bath and a mudroom. Upstairs in the flex room you can enjoy your morning coffee or a book . This floor also has 2 bedrooms, an espacious laundry room and a 5pc bathroom. The best is the very private primary suite with a 5pc ensuite and a large walk in closet. The basement offers a rec room with a second wet bar, a 5pc bath and two more bedrooms. This home embodies quiet living, in a luxury setting, just 15 min west of Edmonton.



Built in 2023

Essential Information

MLS® #

E4443631

| | |
|----------------|------------------------|
| Price | \$1,215,000 |
| Bedrooms | 6 |
| Bathrooms | 4.00 |
| Full Baths | 4 |
| Square Footage | 3,088 |
| Acres | 1.00 |
| Year Built | 2023 |
| Type | Rural |
| Sub-Type | Detached Single Family |
| Style | 2 Storey |
| Status | Active |

Community Information

| | |
|-------------|-----------------------|
| Address | 43 26409 Twp Rd 532 A |
| Area | Rural Parkland County |
| Subdivision | Spring Meadow Estates |
| City | Rural Parkland County |
| County | ALBERTA |
| Province | AB |
| Postal Code | T7X 0W7 |

Amenities

| | |
|----------------|---|
| Features | Detectors Smoke, No Animal Home, No Smoking Home, Parking-Extra |
| Parking Spaces | 5 |

Interior

| | |
|-------------------|---------------------------|
| Interior Features | ensuite bathroom |
| Heating | Forced Air-1, Natural Gas |
| Fireplace | Yes |
| Stories | 3 |
| Has Basement | Yes |
| Basement | Full, Finished |

Exterior

| | |
|-------------------|--------------------|
| Exterior | Wood |
| Exterior Features | Golf Nearby |
| Construction | Wood |
| Foundation | Concrete Perimeter |

Additional Information

Date Listed June 20th, 2025

Days on Market 66

Zoning Zone 70

DATA IS DEEMED RELIABLE BUT IS NOT GUARANTEED ACCURATE BY THE REALTORS® ASSOCIATION OF EDMONTON. COPYRIGHT 2025 BY THE REALTORS® ASSOCIATION OF EDMONTON. ALL RIGHTS RESERVED. Trademarks are owned or controlled by the Canadian Real Estate Association (CREA) and identify real estate professionals who are members of CREA (REALTOR®, REALTORS®) and/or the quality of services they provide (MLS®, Multiple Listing Service®)

Listing information last updated on August 25th, 2025 at 11:18am MDT