

\$325,000 - 5410 Creekside Point(e), Stony Plain

MLS® #E4441104

\$325,000

3 Bedroom, 2.50 Bathroom, 1,383 sqft

Single Family on 0.00 Acres

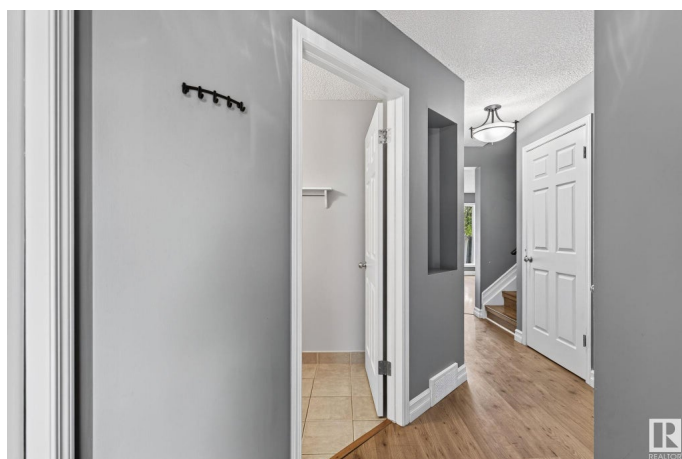
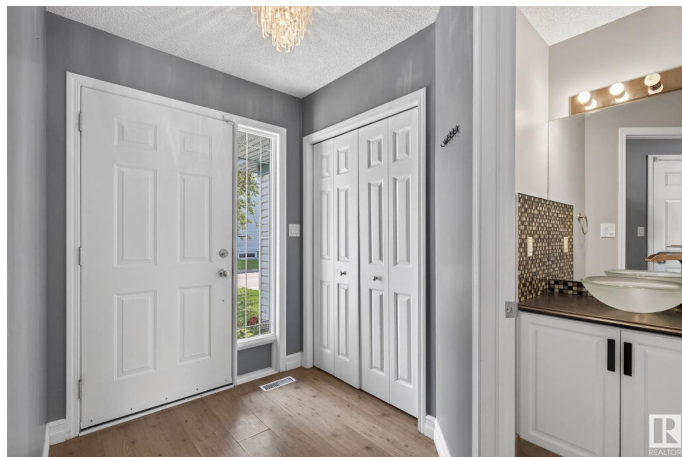
Creekside Point, Stony Plain, AB

NO CONDO FEES ! You'll absolutely love this bright, spacious townhome ! The perfect starter home or investment property, with 3 bedrooms, attached garage and fully fenced yard this is a must see today. The free flow kitchen has pantry, ample counter space with island, opening up to the living room, including nook with lots of room for a table, patio doors leading to small deck large yard. The primary has more the enough space for a King size bed and includes walk in closet with built in organizers and a 3pc ensuite. All this and great location, with no rear neighbors, paved trails, walking distance to everything including the Golf Course. With a little TLC you can make this HOME for many happy years to come !

Built in 1995

Essential Information

| | |
|----------------|-----------|
| MLS® # | E4441104 |
| Price | \$325,000 |
| Bedrooms | 3 |
| Bathrooms | 2.50 |
| Full Baths | 2 |
| Half Baths | 1 |
| Square Footage | 1,383 |
| Acres | 0.00 |



| | |
|------------|----------------------|
| Year Built | 1995 |
| Type | Single Family |
| Sub-Type | Residential Attached |
| Style | 2 Storey |
| Status | Active |

Community Information

| | |
|-------------|-------------------------|
| Address | 5410 Creekside Point(e) |
| Area | Stony Plain |
| Subdivision | Creekside Point |
| City | Stony Plain |
| County | ALBERTA |
| Province | AB |
| Postal Code | T7Z 2A4 |

Amenities

| | |
|-----------|--------------------------|
| Amenities | Off Street Parking, Deck |
| Parking | Single Garage Attached |

Interior

| | |
|-------------------|--|
| Interior Features | ensuite bathroom |
| Appliances | Dishwasher-Built-In, Dryer, Refrigerator, Stove-Electric, Washer, Window Coverings |
| Heating | Forced Air-1, Natural Gas |
| Stories | 2 |
| Has Basement | Yes |
| Basement | Full, Unfinished |

Exterior

| | |
|-------------------|---|
| Exterior | Wood, Vinyl |
| Exterior Features | Backs Onto Park/Trees, Fenced, Flat Site, Golf Nearby, Landscaped, No Back Lane, No Through Road, Park/Reserve, Playground Nearby, Public Swimming Pool, Schools, Shopping Nearby |
| Roof | Asphalt Shingles |
| Construction | Wood, Vinyl |
| Foundation | Concrete Perimeter |

Additional Information

| | |
|----------------|----------------|
| Date Listed | June 7th, 2025 |
| Days on Market | 30 |

Zoning

Zone 91

DATA IS DEEMED RELIABLE BUT IS NOT GUARANTEED ACCURATE BY THE REALTORS® ASSOCIATION OF EDMONTON. COPYRIGHT 2025 BY THE REALTORS® ASSOCIATION OF EDMONTON. ALL RIGHTS RESERVED. Trademarks are owned or controlled by the Canadian Real Estate Association (CREA) and identify real estate professionals who are members of CREA (REALTOR®, REALTORS®) and/or the quality of services they provide (MLS®, Multiple Listing Service®)

Listing information last updated on July 7th, 2025 at 5:32pm MDT