

Courtesy Of Tushar Bhutani Of Century 21 Quantum Realty

# \$2,099,000 - 8126 77 Avenue, Edmonton

MLS® #E4439695

**\$2,099,000**

5 Bedroom, 3.50 Bathroom, 4,904 sqft  
Single Family on 0.00 Acres

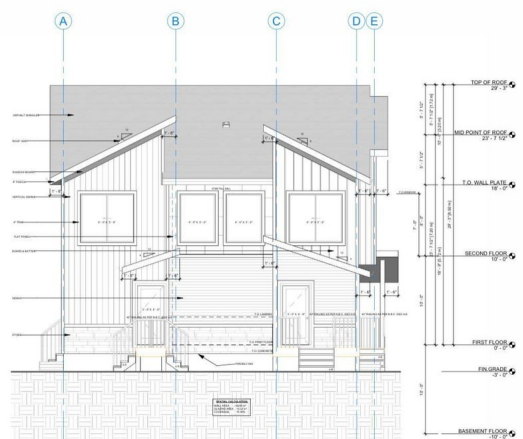
King Edward Park, Edmonton, AB

COMPLETING LATE SUMMER 2026 – A rare opportunity in King Edward Park to acquire a newly built, income-generating 8-unit 4plex designed for long-term performance and strong returns. Spanning over 4,900+ sq ft, this high-quality build offers 19 bedrooms & 12 bathrooms, with premium finishes throughout – luxury vinyl plank, quartz counters, stainless steel appliances, 9 ft ceilings, and upgraded fixtures. Each upper unit includes 3 beds, 2 baths & in-suite laundry, while basement suites are fully self-contained 2 bed, 1 bath legal units with separate entries, full kitchens, and laundry. Estimated rents over \$13,500/month, making this asset ideal for CMHC MLI SELECT. A turnkey multi-family investment built to outperform.

Built in 2025

## Essential Information

MLS® #	E4439695
Price	\$2,099,000
Bedrooms	5
Bathrooms	3.50
Full Baths	3
Half Baths	1
Square Footage	4,904
Acres	0.00



Year Built	2025
Type	Single Family
Sub-Type	4PLEX
Style	Bungalow
Status	Active

### **Community Information**

Address	8126 77 Avenue
Area	Edmonton
Subdivision	King Edward Park
City	Edmonton
County	ALBERTA
Province	AB
Postal Code	T6C 0L2

### **Amenities**

Amenities	Ceiling 9 ft., 9 ft. Basement Ceiling
Parking	Parking Pad Cement/Paved

### **Interior**

Interior Features	ensuite bathroom
Appliances	See Remarks
Heating	Forced Air-1, Natural Gas
Stories	2
Has Suite	Yes
Has Basement	Yes
Basement	Full, Finished

### **Exterior**

Exterior	Wood, Vinyl
Exterior Features	Back Lane, Schools, Shopping Nearby, See Remarks
Roof	Asphalt Shingles
Construction	Wood, Vinyl
Foundation	Concrete Perimeter

### **School Information**

Elementary	Avonmore School
Middle	Kenilworth School
High	MCNALLY SCHOOL

## Additional Information

Date Listed May 30th, 2025

Days on Market 88

Zoning Zone 17

DATA IS DEEMED RELIABLE BUT IS NOT GUARANTEED ACCURATE BY THE REALTORS® ASSOCIATION OF EDMONTON. COPYRIGHT 2025 BY THE REALTORS® ASSOCIATION OF EDMONTON. ALL RIGHTS RESERVED. Trademarks are owned or controlled by the Canadian Real Estate Association (CREA) and identify real estate professionals who are members of CREA (REALTOR®, REALTORS®) and/or the quality of services they provide (MLS®, Multiple Listing Service®)

Listing information last updated on August 25th, 2025 at 9:47pm MDT