

## \$178,300 - 203 10540 80 Avenue, Edmonton

MLS® #E4439634

**\$178,300**

1 Bedroom, 1.00 Bathroom, 661 sqft

Condo / Townhouse on 0.00 Acres

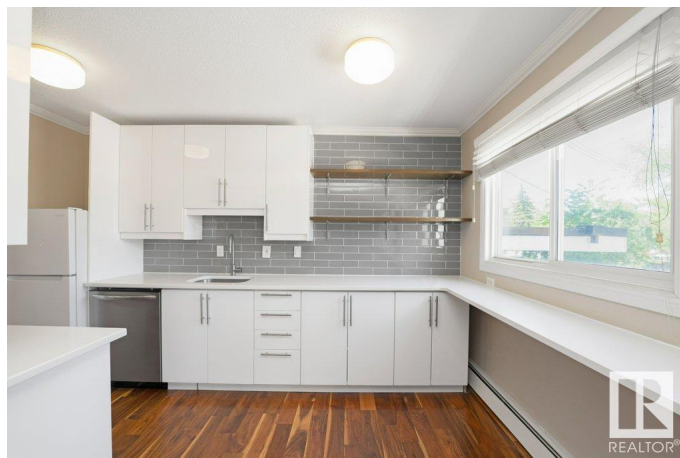
Queen Alexandra, Edmonton, AB

Welcome to this well renovated unit in Golden Ash Manor in the heart of Queen Alexandra. Located just off Whyte Avenue, this stylish and well maintained unit features modern updates and walnut hardwood flooring throughout. The spacious living room has big windows and has a balcony. The kitchen has upgraded high end cabinets, quartz countertop, glass backsplash and stainless steel appliances. The unit includes in-suite laundry and additional storage right by the entrance. This pet-friendly building offers peace of mind with lower monthly condo fees, making it a fantastic option for students, professionals, or investors. With public transit, shops, restaurants, and the University of Alberta all within walking distance, convenience meets comfort in this move-in-ready home.

Built in 1968

### Essential Information

MLS® #	E4439634
Price	\$178,300
Bedrooms	1
Bathrooms	1.00
Full Baths	1
Square Footage	661
Acres	0.00
Year Built	1968



Type	Condo / Townhouse
Sub-Type	Lowrise Apartment
Style	Single Level Apartment
Status	Active

### Community Information

Address	203 10540 80 Avenue
Area	Edmonton
Subdivision	Queen Alexandra
City	Edmonton
County	ALBERTA
Province	AB
Postal Code	T6E 1V3

### Amenities

Amenities	Parking-Visitor, Vinyl Windows
Parking	Stall

### Interior

Appliances	Dishwasher-Built-In, Euro Washer/Dryer Combo, Microwave Hood Fan, Refrigerator, Stove-Electric
Heating	Hot Water, Natural Gas
# of Stories	4
Stories	1
Has Basement	Yes
Basement	None, No Basement

### Exterior

Exterior	Wood, Brick, Vinyl
Exterior Features	Playground Nearby, Public Transportation, Schools, Shopping Nearby
Roof	Asphalt Shingles
Construction	Wood, Brick, Vinyl
Foundation	Concrete Perimeter

### Additional Information

Date Listed	May 30th, 2025
Days on Market	35
Zoning	Zone 15
Condo Fee	\$380

DATA IS DEEMED RELIABLE BUT IS NOT GUARANTEED ACCURATE BY THE REALTORS® ASSOCIATION OF EDMONTON. COPYRIGHT 2025 BY THE REALTORS® ASSOCIATION OF EDMONTON. ALL RIGHTS RESERVED.Trademarks are owned or controlled by the Canadian Real Estate Association (CREA) and identify real estate professionals who are members of CREA (REALTOR®, REALTORS®) and/or the quality of services they provide (MLS®, Multiple Listing Service®)

Listing information last updated on July 4th, 2025 at 10:18am MDT