

# \$250,000 - Twp Rd 561a Range Rd 113, Rural Two Hills County

MLS® #E4437380

**\$250,000**

0 Bedroom, 0.00 Bathroom,  
Rural on 0.13 Acres

Lac Sante (Two Hills County), Rural Two Hills County, AB

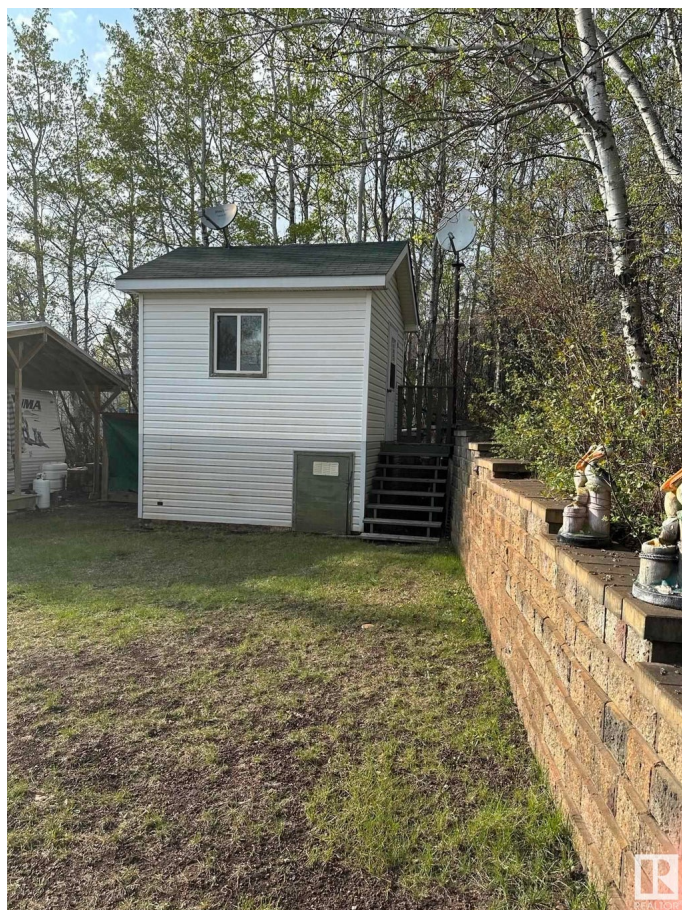
Exceptional lake lot with views of Lac Sante Lake. Only 90 minutes North East of Edmonton. Gated community with year round on-site Park Manager. Pelican bay RV Resort offers Boat Launch and Boat Storage, beautiful sandy private community beach, roped off swimming area, playground area and gazebo, park events, guest rentals, community spirit. This lot is the first lot coming into the Park. There are two RV's with covered decks and a 12x12 bunkhouse. There are trees surrounding the lot for privacy and a firepit in the middle of the lot. Fun for all in this family friendly community.

## Essential Information

MLS® #	E4437380
Price	\$250,000
Bathrooms	0.00
Acres	0.13
Type	Rural
Sub-Type	Vacant Lot/Land
Status	Active

## Community Information

Address Twp Rd 561a Range Rd 113



Area	Rural Two Hills County
Subdivision	Lac Sante (Two Hills County)
City	Rural Two Hills County
County	ALBERTA
Province	AB
Postal Code	T0B 0P0

### Exterior

Exterior Features Beach Access, Boating, Fenced, Gated Community, Lake Access Property, Lake View, Landscaped, Level Land, Low Maintenance Landscape, Playground Nearby

### Additional Information

Date Listed	May 20th, 2025
Days on Market	49
Zoning	Zone 60
HOA Fees	850
HOA Fees Freq.	Semi-Annually

DATA IS DEEMED RELIABLE BUT IS NOT GUARANTEED ACCURATE BY THE REALTORS® ASSOCIATION OF EDMONTON. COPYRIGHT 2025 BY THE REALTORS® ASSOCIATION OF EDMONTON. ALL RIGHTS RESERVED. Trademarks are owned or controlled by the Canadian Real Estate Association (CREA) and identify real estate professionals who are members of CREA (REALTOR®, REALTORS®) and/or the quality of services they provide (MLS®, Multiple Listing Service®)

Listing information last updated on July 8th, 2025 at 9:02am MDT