

\$299,900 - 6245 56 Avenue, Wetaskiwin

MLS® #E4436747

\$299,900

0 Bedroom, 0.00 Bathroom,
Land Commercial on 0.00 Acres

Annexation - 92, Wetaskiwin, AB

Located on the north west end of City of Wetaskiwin, across from the "By the Lake Park", one of Wetaskiwin's treasured parks. This 5.46 acres could be the perfect location for your new business venture! Huge potential here! Level land, on paved street. Lots of room, good frontage and very deep lot.

Essential Information

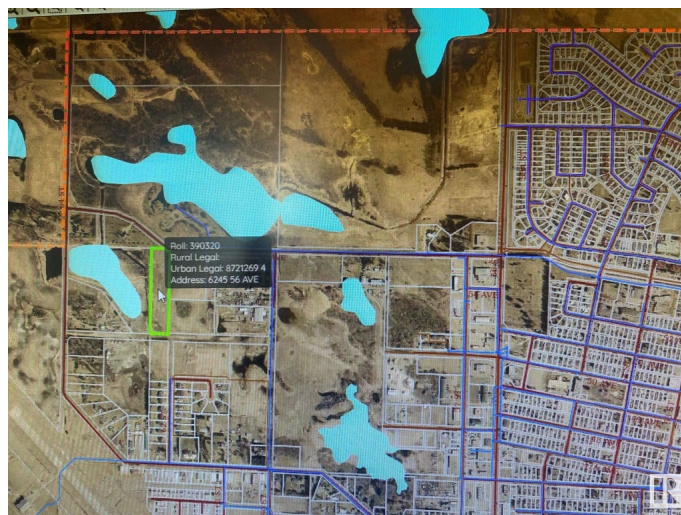
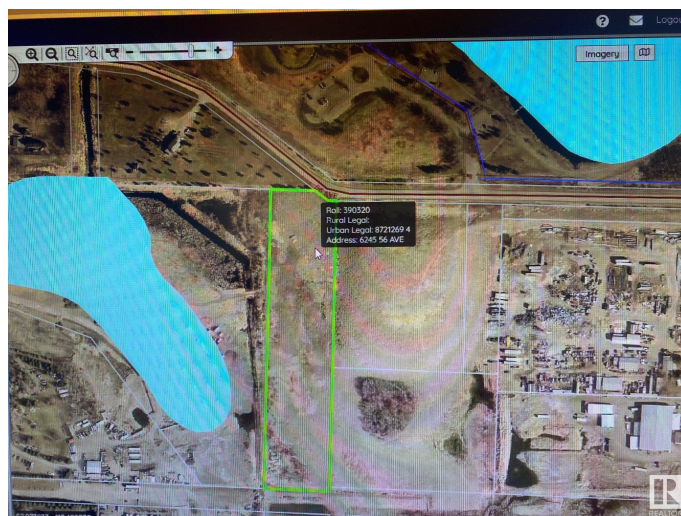
MLS® #	E4436747
Price	\$299,900
Bathrooms	0.00
Acres	0.00
Type	Land Commercial
Status	Active

Community Information

Address	6245 56 Avenue
Area	Wetaskiwin
Subdivision	Annexation - 92
City	Wetaskiwin
County	ALBERTA
Province	AB
Postal Code	T9A 2B3

Additional Information

Date Listed	May 15th, 2025
-------------	----------------



Days on Market 106

Zoning Zone 80

DATA IS DEEMED RELIABLE BUT IS NOT GUARANTEED ACCURATE BY THE REALTORS® ASSOCIATION OF EDMONTON. COPYRIGHT 2025 BY THE REALTORS® ASSOCIATION OF EDMONTON. ALL RIGHTS RESERVED. Trademarks are owned or controlled by the Canadian Real Estate Association (CREA) and identify real estate professionals who are members of CREA (REALTOR®, REALTORS®) and/or the quality of services they provide (MLS®, Multiple Listing Service®)

Listing information last updated on August 29th, 2025 at 8:47am MDT