

# \$615,000 - 218 Crystal Creek Drive, Leduc

MLS® #E4433937

## \$615,000

3 Bedroom, 3.00 Bathroom, 2,119 sqft  
Single Family on 0.00 Acres

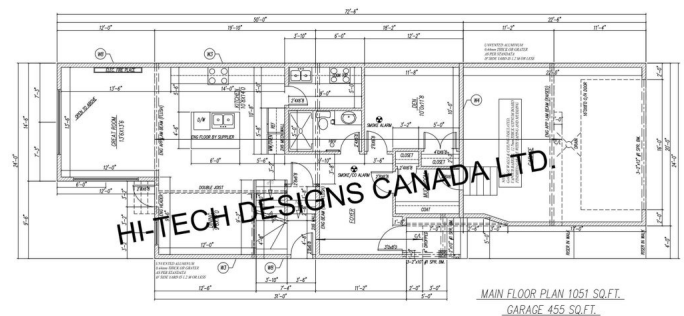
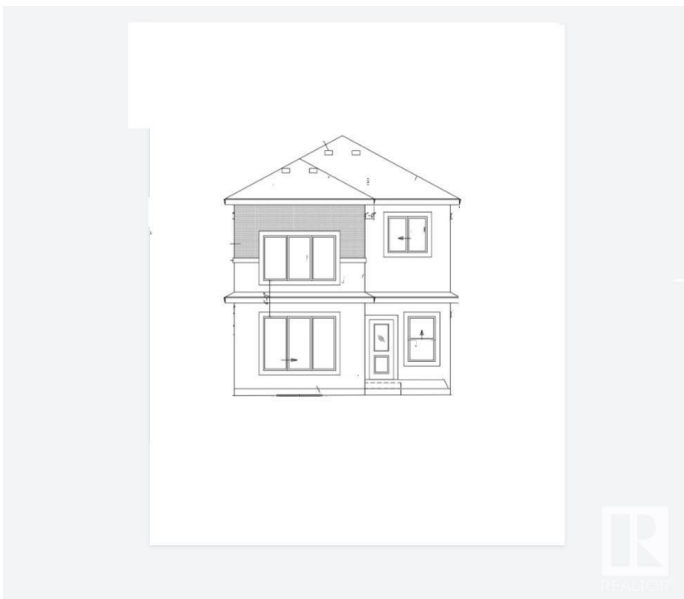
Crystal Creek\_LEDU, Leduc, AB

Step into this stunning two-storey home in Leduc, designed for both style and comfort. The main floor boasts a bright and inviting living room with cozy fireplace, a spacious dining area, and a sleek kitchen. A versatile den, a 3-piece bathroom, and a mudroom add to the home's practicality. Upstairs, a bonus room with a fireplace provides the perfect space for relaxation. The upper level also includes a laundry room, a 4-piece bathroom, two well-sized bedrooms, and a luxurious primary suite with a walk-in closet and a spa-like 5-piece ensuite. Thoughtfully designed for modern living, this home is a must-see! Photos are of a completed show home and are for representation only. Selections can be customized

Built in 2025

### Essential Information

|                |           |
|----------------|-----------|
| MLS® #         | E4433937  |
| Price          | \$615,000 |
| Bedrooms       | 3         |
| Bathrooms      | 3.00      |
| Full Baths     | 3         |
| Square Footage | 2,119     |
| Acres          | 0.00      |
| Year Built     | 2025      |



MAIN FLOOR PLAN 1051 SQ.FT.  
GARAGE 455 SQ.FT.

|          |                        |
|----------|------------------------|
| Type     | Single Family          |
| Sub-Type | Detached Single Family |
| Style    | 2 Storey               |
| Status   | Active                 |

### Community Information

|             |                         |
|-------------|-------------------------|
| Address     | 218 Crystal Creek Drive |
| Area        | Leduc                   |
| Subdivision | Crystal Creek_LEDU      |
| City        | Leduc                   |
| County      | ALBERTA                 |
| Province    | AB                      |
| Postal Code | T9E 1N3                 |

### Amenities

|           |  |
|-----------|--|
| Amenities | Detectors Smoke, No Animal Home, No Smoking Home |
| Parking   | Double Garage Attached                           |

### Interior

|                   |                           |
|-------------------|---------------------------|
| Interior Features | ensuite bathroom          |
| Appliances        | See Remarks               |
| Heating           | Forced Air-1, Natural Gas |
| Fireplace         | Yes                       |
| Fireplaces        | Tile Surround             |
| Stories           | 2                         |
| Has Basement      | Yes                       |
| Basement          | Full, Unfinished          |

### Exterior

|                   |  |
|-------------------|--|
| Exterior          | Wood, Stone, Vinyl   |
| Exterior Features | Playground Nearby, Public Transportation, Schools, Shopping Nearby |
| Roof              | Asphalt Shingles   |
| Construction      | Wood, Stone, Vinyl   |
| Foundation        | Block  |

### Additional Information

|                |               |
|----------------|---------------|
| Date Listed    | May 1st, 2025 |
| Days on Market | 136           |
| Zoning         | Zone 81       |

DATA IS DEEMED RELIABLE BUT IS NOT GUARANTEED ACCURATE BY THE REALTORS® ASSOCIATION OF EDMONTON. COPYRIGHT 2025 BY THE REALTORS® ASSOCIATION OF EDMONTON. ALL RIGHTS RESERVED. Trademarks are owned or controlled by the Canadian Real Estate Association (CREA) and identify real estate professionals who are members of CREA (REALTOR®, REALTORS®) and/or the quality of services they provide (MLS®, Multiple Listing Service®)

Listing information last updated on September 14th, 2025 at 7:17am MDT