

## \$74,000 - 18- -59512 Rr 255, Rural Westlock County

MLS® #E4433880

**\$74,000**

0 Bedroom, 0.00 Bathroom,  
Rural on 0.72 Acres

Crosswind Landing, Rural Westlock County,  
AB

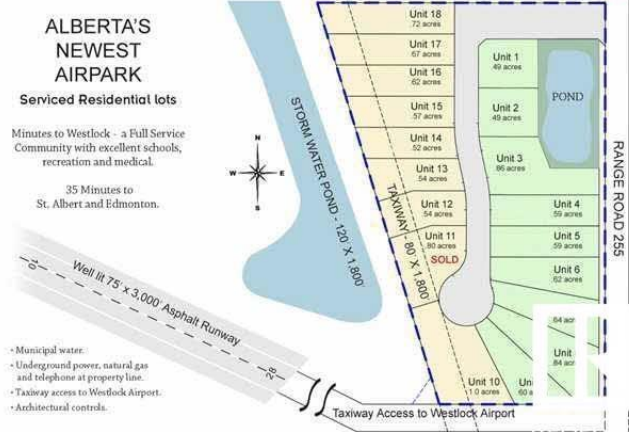
What a beautiful spot to build your dream home in Westlock County's upscale architecturally controlled sub-division from .14 acres to 1 acre in size that have municipal water, underground power, gas and telephone to each lot. These lots have aircraft access to Westlock Airport and it's an easy commute to Edmonton (35 minutes to St. Albert) or points north . Adjacent to Rainbow Park just 4 1/2 miles from town. Large ponds with wildlife (largest is 1800 ft long for kayak/canoeing), 1000 lovely, planted trees (2014) including Lilac, Golden Willow, Red Osier Dogwood & Laurel Leaf Willows surround the sub-division and embrace the entryway. Westlock is a full service community with modern hospital, public & private schools, shopping & recreational facilities, 18 hole golf and 15 minutes to Tawatinaw Ski hill with downhill, snowboard, tubing & cross-country skiing. Country living at it's finest. GST may apply.

### Essential Information

MLS® #	E4433880
Price	\$74,000
Bathrooms	0.00
Acres	0.72
Type	Rural



### Westlock's Most Exclusive Upscale Community



Sub-Type	Vacant Lot/Land
Status	Active

### Community Information

Address	18- -59512 Rr 255
Area	Rural Westlock County
Subdivision	Crosswind Landing
City	Rural Westlock County
County	ALBERTA
Province	AB
Postal Code	T7P 2P4

### Exterior

Exterior Features	Airport Nearby, Level Land, Schools, Shopping Nearby, Ski Hill Nearby, Stream/Pond, See Remarks
-------------------	---

### Additional Information

Date Listed	April 29th, 2025
Days on Market	81
Zoning	Zone 70

DATA IS DEEMED RELIABLE BUT IS NOT GUARANTEED ACCURATE BY THE REALTORS® ASSOCIATION OF EDMONTON. COPYRIGHT 2025 BY THE REALTORS® ASSOCIATION OF EDMONTON. ALL RIGHTS RESERVED. Trademarks are owned or controlled by the Canadian Real Estate Association (CREA) and identify real estate professionals who are members of CREA (REALTOR®, REALTORS®) and/or the quality of services they provide (MLS®, Multiple Listing Service®)

Listing information last updated on July 19th, 2025 at 7:17pm MDT