

# \$113,500 - 58 4224 Twp Road 545, Rural Lac Ste. Anne County

MLS® #E4433259

**\$113,500**

1 Bedroom, 0.00 Bathroom, 532 sqft

Rural on 0.38 Acres

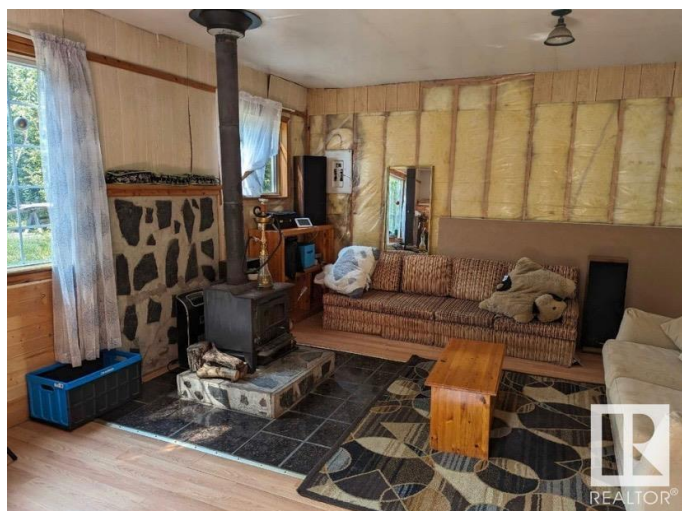
Warwa Estates, Rural Lac Ste. Anne County, AB

Rustic Cabin Getaway at Warwa Estates! Just 45 minutes from Edmonton, this charming rustic cabin sits on nearly half an acre, surrounded by mature trees – perfect for outdoor enthusiasts. Featuring 100-amp power, an open-concept design, and a cozy wood-burning fireplace, this cabin comes furnished with a queen bed and sofa, plus a 40-ft 5th wheel trailer included for extra space. Located right next to the Summer Village of West Cove, with boat launches, quadding trails, a playground, and ball fields all within walking distance. The septic tank and drainage system are already in place. The cabin is in good condition, while the garage and rear addition offer a great opportunity for renovation or expansion. Whether you’re looking for a weekend escape, a hunting base, or a family retreat, this property is the ideal getaway – and it’s all less than an hour from the city!

Built in 1992

## Essential Information

|          |           |
|----------|-----------|
| MLS® #   | E4433259  |
| Price    | \$113,500 |
| Bedrooms | 1         |



|                |          |
|----------------|----------|
| Bathrooms      | 0.00     |
| Square Footage | 532      |
| Acres          | 0.38     |
| Year Built     | 1992     |
| Type           | Rural    |
| Sub-Type       | Cottage  |
| Style          | Bungalow |
| Status         | Active   |

### Community Information

|             |                            |
|-------------|----------------------------|
| Address     | 58 4224 Twp Road 545       |
| Area        | Rural Lac Ste. Anne County |
| Subdivision | Warwa Estates              |
| City        | Rural Lac Ste. Anne County |
| County      | ALBERTA                    |
| Province    | AB                         |
| Postal Code | T0E 0L0                    |

### Amenities

|          |                 |
|----------|-----------------|
| Features | Parking-Visitor |
|----------|-----------------|

### Interior

|              |                   |
|--------------|-------------------|
| Heating      | Wood Stove, Wood  |
| Stories      | 1                 |
| Has Basement | Yes               |
| Basement     | None, No Basement |

### Exterior

|                   |  |
|-------------------|--|
| Exterior          | Wood   |
| Exterior Features | Boating, No Through Road, Picnic Area, Playground Nearby, Private Fishing, Private Setting |
| Construction      | Wood   |
| Foundation        | Piling   |

### Additional Information

|                |                  |
|----------------|------------------|
| Date Listed    | April 29th, 2025 |
| Days on Market | 69               |
| Zoning         | Zone 71          |

DATA IS DEEMED RELIABLE BUT IS NOT GUARANTEED ACCURATE BY THE REALTORS® ASSOCIATION OF

EDMONTON. COPYRIGHT 2025 BY THE REALTORS® ASSOCIATION OF EDMONTON. ALL RIGHTS RESERVED.Trademarks are owned or controlled by the Canadian Real Estate Association (CREA) and identify real estate professionals who are members of CREA (REALTOR®, REALTORS®) and/or the quality of services they provide (MLS®, Multiple Listing Service®)

Listing information last updated on July 7th, 2025 at 7:17pm MDT