

# \$449,900 - 3240 Keswick Way, Edmonton

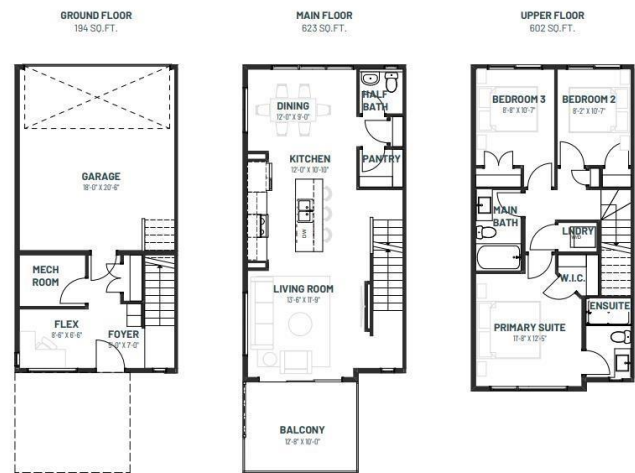
MLS® #E4432848

**\$449,900**

3 Bedroom, 2.50 Bathroom, 1,419 sqft  
Single Family on 0.00 Acres

Keswick Area, Edmonton, AB

Perfect for young couples or single parents, the Metro Tailored townhome isnâ€™t just a place to live â€“ itâ€™s a step toward financial independence and long-term opportunity. Whether youâ€™re looking to make a smart investment or help your adult children start their home ownership journey, this modern Westcoast elevation offers the perfect foundation. With 3 levels of above ground living space, oversized windows flood the home with natural light, and an expansive second level balcony with sleek modern railings, every detail is designed for comfort and style. Enjoy the convenience of a double rear attached garage, a cozy fireplace, and fully landscaped, low maintenance living â€“ all with no condo fees. This home is more than space â€“ itâ€™s your canvas for creating a future. \*photos are for representation only. Colours and finishing may vary\*



Built in 2025

## Essential Information

MLS® #	E4432848
Price	\$449,900
Bedrooms	3
Bathrooms	2.50
Full Baths	2
Half Baths	1

Square Footage	1,419
Acres	0.00
Year Built	2025
Type	Single Family
Sub-Type	Residential Attached
Style	3 Storey
Status	Active

### Community Information

Address	3240 Keswick Way
Area	Edmonton
Subdivision	Keswick Area
City	Edmonton
County	ALBERTA
Province	AB
Postal Code	T6W 5N8

### Amenities

Amenities	On Street Parking, Ceiling 9 ft., Detectors Smoke, No Animal Home, No Smoking Home, Smart/Program. Thermostat, Vinyl Windows, HRV System
Parking Spaces	4
Parking	Double Garage Attached

### Interior

Interior Features	ensuite bathroom
Appliances	Dishwasher-Built-In, Microwave Hood Fan, Refrigerator, Stove-Electric
Heating	Forced Air-1, Natural Gas
Fireplace	Yes
Fireplaces	Tile Surround
Stories	3
Has Basement	Yes
Basement	None, No Basement

### Exterior

Exterior	Wood, Vinyl
Exterior Features	Back Lane, Corner Lot, Flat Site, Landscaped, Playground Nearby, Schools, Shopping Nearby
Roof	Asphalt Shingles

Construction	Wood, Vinyl
Foundation	Slab

**Additional Information**

Date Listed	April 25th, 2025
Days on Market	116
Zoning	Zone 56
HOA Fees	200
HOA Fees Freq.	Annually

DATA IS DEEMED RELIABLE BUT IS NOT GUARANTEED ACCURATE BY THE REALTORS® ASSOCIATION OF EDMONTON. COPYRIGHT 2025 BY THE REALTORS® ASSOCIATION OF EDMONTON. ALL RIGHTS RESERVED.Trademarks are owned or controlled by the Canadian Real Estate Association (CREA) and identify real estate professionals who are members of CREA (REALTOR®, REALTORS®) and/or the quality of services they provide (MLS®, Multiple Listing Service®)

Listing information last updated on August 19th, 2025 at 4:02pm MDT