

\$2,500,000 - N/A, Rural Parkland County

MLS® #E4429841

\$2,500,000

5 Bedroom, 5.50 Bathroom, 4,889 sqft

Rural on 3.00 Acres

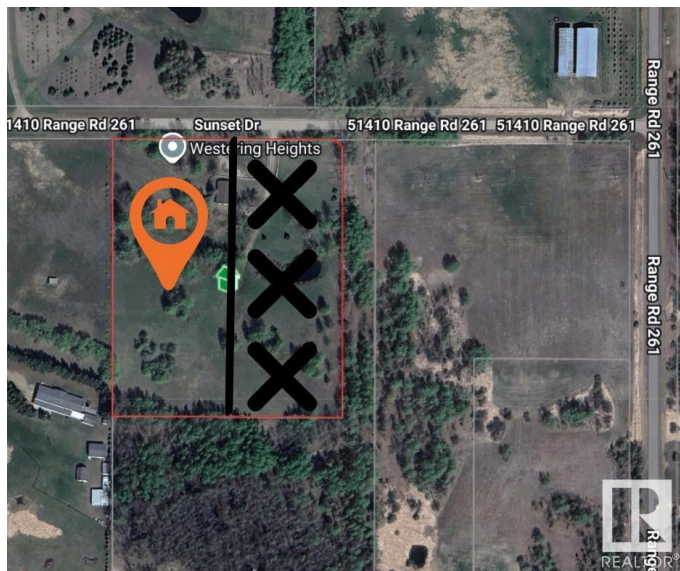
Westering Heights (Parkland), Rural Parkland County, AB

Great opportunity to own a luxury estate on a 3-acre parcel just 10 mins from the Anthony Hendayâ€”close to Costco, River Cree & all amenities. This stunning 2-storey home offers almost 5,000 sq. ft. of above-grade living space, a 4-car garage, & a walkout bsmt backing onto green space. Upstairs: 5 spacious bdrms, each w/ its own ensuite & walk-in closet. The primary suite is a true retreatâ€”featuring a center island closet, 6-pc ensuite w/ steam shower, coffee bar, & private patio. A bright loft also opens onto its own balcony. Main floor impresses w/ soaring ceilings, a large great rm, formal dining, & an oversized kitchen + spice kitchen. The walkout bsmt is left unfinishedâ€”offering you the chance to build out your dream lower level. Enjoy luxury living surrounded by nature, just minutes from city life. Premium finishes, open-concept design, and space to growâ€”this home blends elegance, comfort, and function in a really great setting.

Built in 2025

Essential Information

MLS® #	E4429841
Price	\$2,500,000
Bedrooms	5



Bathrooms	5.50
Full Baths	5
Half Baths	1
Square Footage	4,889
Acres	3.00
Year Built	2025
Type	Rural
Sub-Type	Detached Single Family
Style	2 Storey
Status	Active

Community Information

Address	N/A
Area	Rural Parkland County
Subdivision	Westering Heights (Parkland)
City	Rural Parkland County
County	ALBERTA
Province	AB
Postal Code	T7Y 1B4

Amenities

Features	See Remarks
Parking Spaces	7

Interior

Interior Features	ensuite bathroom
Heating	Forced Air-1, Natural Gas
Stories	2
Has Basement	Yes
Basement	Full, Unfinished

Exterior

Exterior	Wood
Exterior Features	Cul-De-Sac, No Through Road, Private Setting
Construction	Wood
Foundation	Concrete Perimeter

Additional Information

Date Listed	April 9th, 2025
-------------	-----------------

Days on Market 132

Zoning Zone 90

DATA IS DEEMED RELIABLE BUT IS NOT GUARANTEED ACCURATE BY THE REALTORS® ASSOCIATION OF EDMONTON. COPYRIGHT 2025 BY THE REALTORS® ASSOCIATION OF EDMONTON. ALL RIGHTS RESERVED. Trademarks are owned or controlled by the Canadian Real Estate Association (CREA) and identify real estate professionals who are members of CREA (REALTOR®, REALTORS®) and/or the quality of services they provide (MLS®, Multiple Listing Service®)

Listing information last updated on August 19th, 2025 at 6:32pm MDT