

## \$149,900 - Hwy 633 Rr21, Rural Lac Ste. Anne County

MLS® #E4425358

**\$149,900**

0 Bedroom, 0.00 Bathroom,  
Rural on 5.36 Acres

None, Rural Lac Ste. Anne County, AB

Private partly treed 5.36 acres located not in subdivision 3 KM from Onoway with K to grade 12, all services & amenities. Build your dream home or shop with living space above. .Power & gas at property line. Quiet, private and clean country living!

### Essential Information

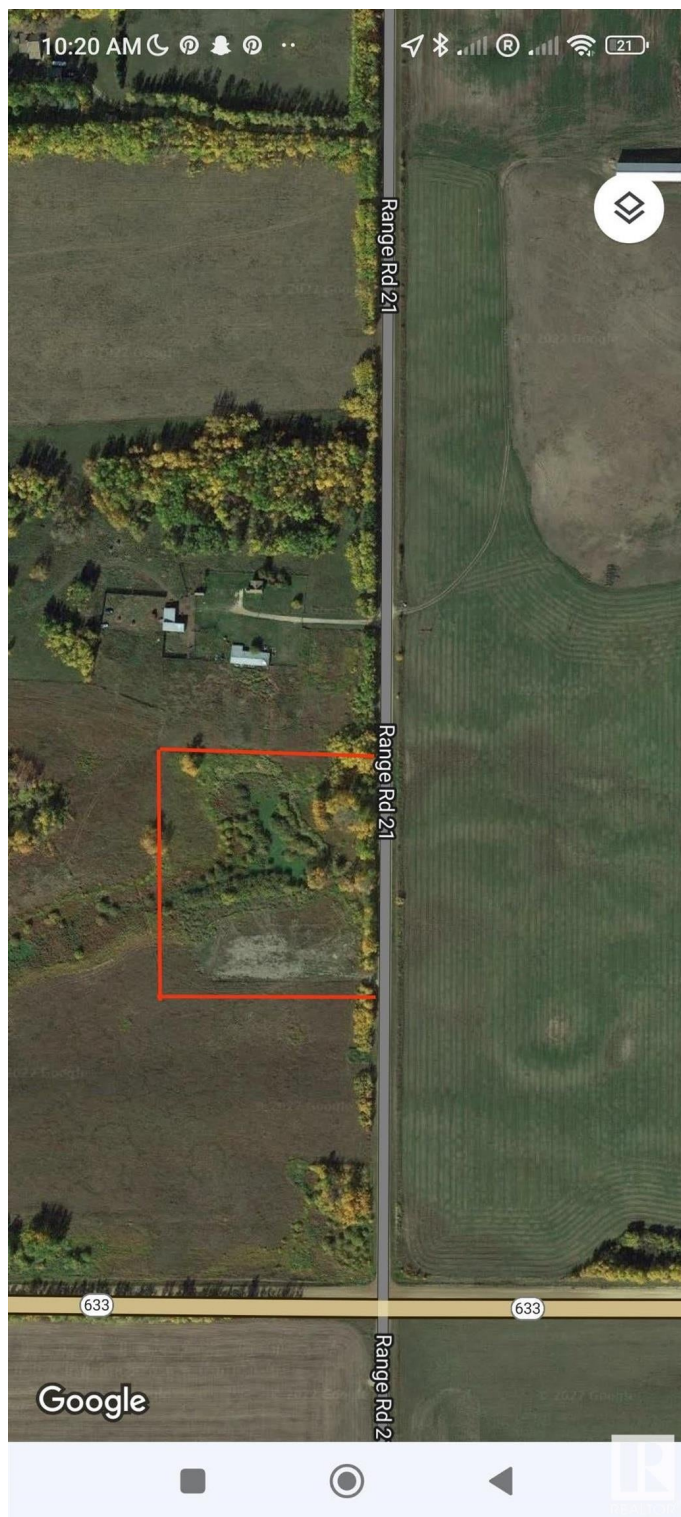
MLS® #	E4425358
Price	\$149,900
Bathrooms	0.00
Acres	5.36
Type	Rural
Sub-Type	Vacant Lot/Land
Status	Active

### Community Information

Address	Hwy 633 Rr21
Area	Rural Lac Ste. Anne County
Subdivision	None
City	Rural Lac Ste. Anne County
County	ALBERTA
Province	AB
Postal Code	T0E 1V0

### Exterior

Exterior Features Treed Lot, Partially Fenced



## Additional Information

Date Listed	March 12th, 2025
Days on Market	164
Zoning	Zone 70



DATA IS DEEMED RELIABLE BUT IS NOT GUARANTEED ACCURATE BY THE REALTORS® ASSOCIATION OF EDMONTON. COPYRIGHT 2025 BY THE REALTORS® ASSOCIATION OF EDMONTON. ALL RIGHTS RESERVED. Trademarks are owned or controlled by the Canadian Real Estate Association (CREA) and identify real estate professionals who are members of CREA (REALTOR®, REALTORS®) and/or the quality of services they provide (MLS®, Multiple Listing Service®)

Listing information last updated on August 23rd, 2025 at 6:47pm MDT

