

\$399,000 - 04-20-57-05, Rural Lamont County

MLS® #E4423710

\$399,000

0 Bedroom, 0.00 Bathroom,
Rural on 54.61 Acres

None, Rural Lamont County, AB

Welcome to your dream land. This 54 acre area of land is perfect for someone looking to escape into nature. With surrounding trees and a creek flowing through to the North Saskatchewan this property is your ideal outdoor retreat. Fishing, quading, camping, endless activities to do! Gas and Power line on Highway 38.

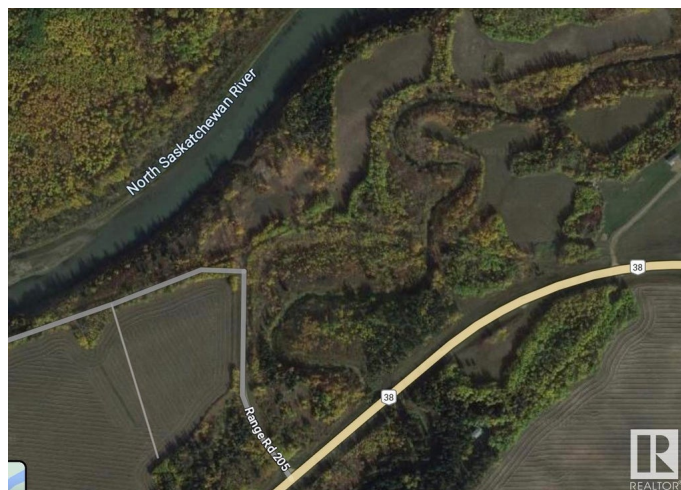
Essential Information

MLS® #	E4423710
Price	\$399,000
Bathrooms	0.00
Acres	54.61
Type	Rural
Sub-Type	Vacant Lot/Land
Status	Active

Community Information

Address	04-20-57-05
Area	Rural Lamont County
Subdivision	None
City	Rural Lamont County
County	ALBERTA
Province	AB
Postal Code	T0B 0G8

Exterior



Exterior Features Boating, Creek, Environmental Reserve, Fruit Trees/Shrubs, Not
Fenced, Private Fishing, Private Setting, River Valley View, River View,
Rolling Land

Additional Information

Date Listed March 3rd, 2025
Days on Market 170
Zoning Zone 60

DATA IS DEEMED RELIABLE BUT IS NOT GUARANTEED ACCURATE BY THE REALTORS® ASSOCIATION OF EDMONTON. COPYRIGHT 2025 BY THE REALTORS® ASSOCIATION OF EDMONTON. ALL RIGHTS RESERVED.Trademarks are owned or controlled by the Canadian Real Estate Association (CREA) and identify real estate professionals who are members of CREA (REALTOR®, REALTORS®) and/or the quality of services they provide (MLS®, Multiple Listing Service®)
Listing information last updated on August 20th, 2025 at 12:03pm MDT