

\$389,900 - #172 55062 Twp Road 462, Rural Wetaskiwin County

MLS® #E4422926

\$389,900

4 Bedroom, 1.00 Bathroom, 1,423 sqft

Rural on 0.47 Acres

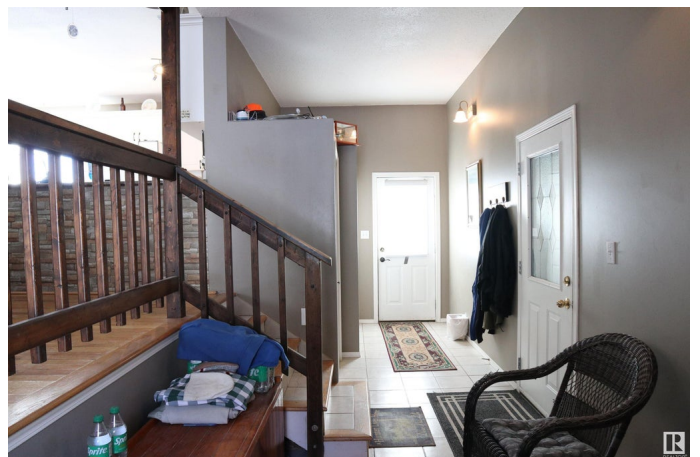
Willow Haven Estate, Rural Wetaskiwin County, AB

This 1423.22 sq/ft home is situated on .47 acres walking distance to Buck Lake. Located in Willow Haven Estate this property shows off its Pride of Ownership. Enter through the double attached garage with In-Floor Heat that carries throughout the entire home. The Foyer has a wood fireplace and leads you into the open Kitchen, Dining Room, and Living Room with a patio door to the covered back deck. The primary bedroom also has a patio door to the same deck that overlooks the fenced backyard and into the environmental reserve behind the property. Three more bedrooms accompany the Primary with one currently being used as an office. This beautiful property also has access to the private gated boat launch, allowing a dock, and boat lift. Start enjoying life on an acreage at the Lake!

Built in 1997

Essential Information

| | |
|------------|-----------|
| MLS® # | E4422926 |
| Price | \$389,900 |
| Bedrooms | 4 |
| Bathrooms | 1.00 |
| Full Baths | 1 |



| | |
|----------------|------------------------|
| Square Footage | 1,423 |
| Acres | 0.47 |
| Year Built | 1997 |
| Type | Rural |
| Sub-Type | Detached Single Family |
| Style | Raised Bungalow |
| Status | Active |

Community Information

| | |
|-------------|-------------------------|
| Address | #172 55062 Twp Road 462 |
| Area | Rural Wetaskiwin County |
| Subdivision | Willow Haven Estate |
| City | Rural Wetaskiwin County |
| County | ALBERTA |
| Province | AB |
| Postal Code | T0C 0T0 |

Amenities

| | |
|----------|--|
| Features | Off Street Parking, Crawl Space, Deck, Fire Pit, No Smoking Home, Natural Gas BBQ Hookup |
|----------|--|

Interior

| | |
|--------------|-----------------------------------|
| Heating | In Floor Heat System, Natural Gas |
| Fireplace | Yes |
| Stories | 1 |
| Has Basement | Yes |
| Basement | None, No Basement |

Exterior

| | |
|-------------------|---|
| Exterior | Wood |
| Exterior Features | Boating, Flat Site, Lake Access Property, Landscaped, Level Land, Schools, Treed Lot, See Remarks, Partially Fenced |
| Construction | Wood |
| Foundation | Piling |

Additional Information

| | |
|----------------|---------------------|
| Date Listed | February 26th, 2025 |
| Days on Market | 175 |
| Zoning | Zone 96 |

HOA Fees 80

HOA Fees Freq. Annually

DATA IS DEEMED RELIABLE BUT IS NOT GUARANTEED ACCURATE BY THE REALTORS® ASSOCIATION OF EDMONTON. COPYRIGHT 2025 BY THE REALTORS® ASSOCIATION OF EDMONTON. ALL RIGHTS RESERVED. Trademarks are owned or controlled by the Canadian Real Estate Association (CREA) and identify real estate professionals who are members of CREA (REALTOR®, REALTORS®) and/or the quality of services they provide (MLS®, Multiple Listing Service®)

Listing information last updated on August 20th, 2025 at 12:17pm MDT