

## \$129,900 - Twp 535 Rr 41, Rural Lac Ste. Anne County

MLS® #E4417890

**\$129,900**

0 Bedroom, 0.00 Bathroom,  
Rural on 4.99 Acres

None, Rural Lac Ste. Anne County, AB

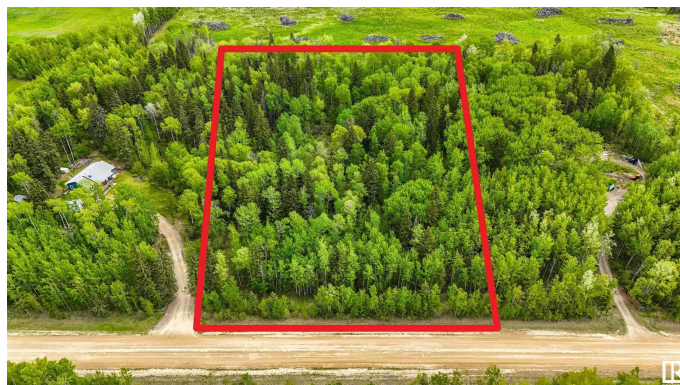
**BUILD YOUR DREAM!** Welcome to this peaceful property, located mere minutes from Wabamun. If you're looking for the perfect place to build your DREAM HOME, featuring 4.99 acres, where nature is everywhere you turn, you've found it. Gas & Power are both available at the property line, so bring your ideas and start building the home of your dreams. If location is important to you, you will love being a short drive from the charming community of Wabamun. You'll also appreciate being moments away from Highway 16, making a commute to Spruce Grove, Stony Plain or Edmonton within reach. Don't delay, come have a look at this property today!

### Essential Information

MLS® #	E4417890
Price	\$129,900
Bathrooms	0.00
Acres	4.99
Type	Rural
Sub-Type	Vacant Lot/Land
Status	Active

### Community Information

Address	Twp 535 Rr 41
Area	Rural Lac Ste. Anne County



Subdivision	None
City	Rural Lac Ste. Anne County
County	ALBERTA
Province	AB
Postal Code	T0E 2K0

## Exterior

Exterior Features Private Setting, Treed Lot, See Remarks

## Additional Information

Date Listed	January 13th, 2025
Days on Market	145
Zoning	Zone 70

DATA IS DEEMED RELIABLE BUT IS NOT GUARANTEED ACCURATE BY THE REALTORS® ASSOCIATION OF EDMONTON. COPYRIGHT 2025 BY THE REALTORS® ASSOCIATION OF EDMONTON. ALL RIGHTS RESERVED. Trademarks are owned or controlled by the Canadian Real Estate Association (CREA) and identify real estate professionals who are members of CREA (REALTOR®, REALTORS®) and/or the quality of services they provide (MLS®, Multiple Listing Service®)

Listing information last updated on June 7th, 2025 at 8:02pm MDT