

## \$89,500 - Highway 15 Rrd 185, Rural Lamont County

MLS® #E4413435

**\$89,500**

0 Bedroom, 0.00 Bathroom,  
Rural on 24.02 Acres

None, Rural Lamont County, AB

24.02 Acres Located along the SOUTH Side of Highway 15 just 1/2 Mile East of the Village of Chipman. Great Location to build your Dream home or Home Based Business with Highway frontage. Truckers Dream Location with easy access to Highway 15. Current land mainly in Crop .

### Essential Information

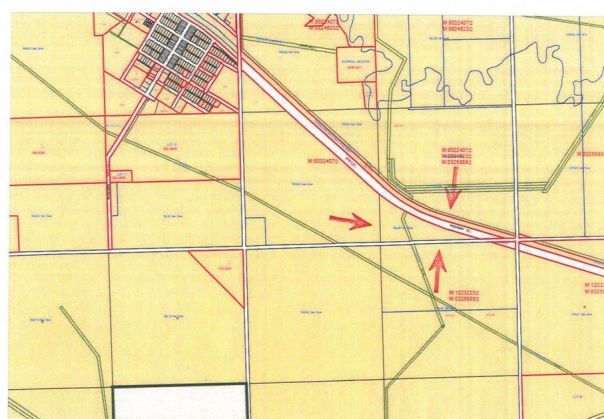
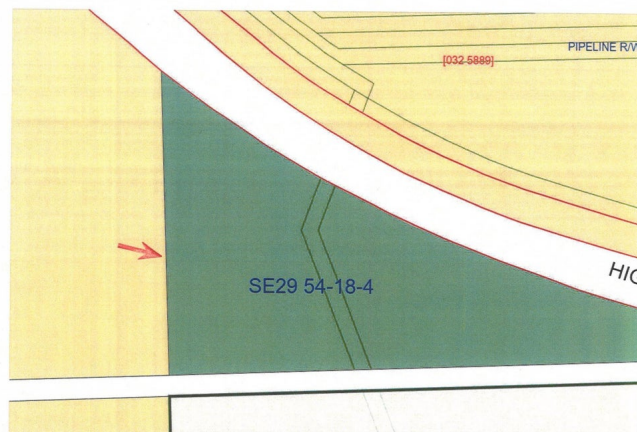
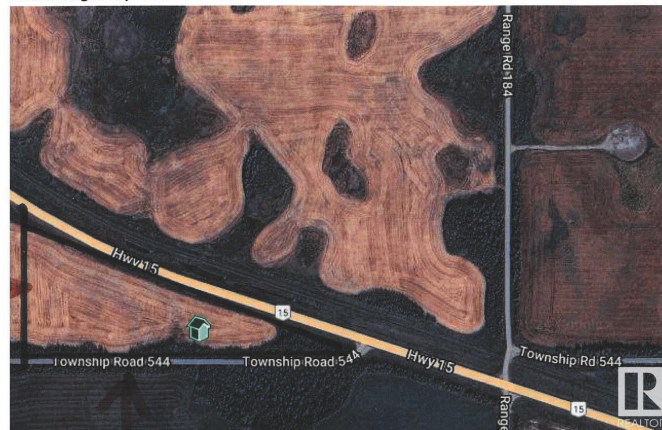
MLS® #	E4413435
Price	\$89,500
Bathrooms	0.00
Acres	24.02
Type	Rural
Sub-Type	Vacant Lot/Land
Status	Active

### Community Information

Address	Highway 15 Rrd 185
Area	Rural Lamont County
Subdivision	None
City	Rural Lamont County
County	ALBERTA
Province	AB
Postal Code	T0B 0W0

### Exterior

Address: Highway 15 RRD 185



Exterior Features    See Remarks

**Additional Information**

Date Listed                November 9th, 2024

Days on Market        240

Zoning                    Zone 60

DATA IS DEEMED RELIABLE BUT IS NOT GUARANTEED ACCURATE BY THE REALTORS® ASSOCIATION OF EDMONTON. COPYRIGHT 2025 BY THE REALTORS® ASSOCIATION OF EDMONTON. ALL RIGHTS RESERVED.Trademarks are owned or controlled by the Canadian Real Estate Association (CREA) and identify real estate professionals who are members of CREA (REALTOR®, REALTORS®) and/or the quality of services they provide (MLS®, Multiple Listing Service®)

Listing information last updated on July 6th, 2025 at 10:47pm MDT