

\$89,500 - Hwy 15 Rrd 185, Rural Lamont County

MLS® #E4413434

\$89,500

0 Bedroom, 0.00 Bathroom,
Rural on 21.00 Acres

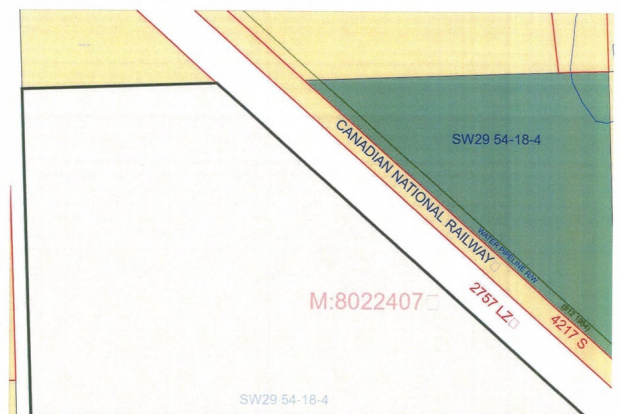
None, Rural Lamont County, AB

21 Acres with Highway and potential access to City Water. Property located 1/4 mile East of the Village of Chipman along Highway 15. Combination of crop & Treed areas property even has a creek on the north boundary of this acreage. Build your dream home or expand grazing land for your herd.



Essential Information

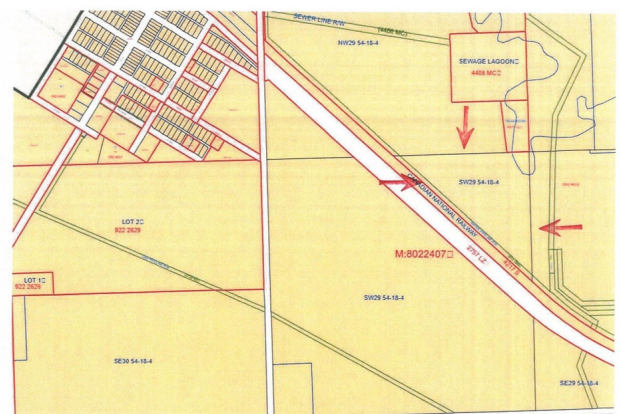
| | |
|-----------|-----------------|
| MLS® # | E4413434 |
| Price | \$89,500 |
| Bathrooms | 0.00 |
| Acres | 21.00 |
| Type | Rural |
| Sub-Type | Vacant Lot/Land |
| Status | Active |



Community Information

| | |
|-------------|---------------------|
| Address | Hwy 15 Rrd 185 |
| Area | Rural Lamont County |
| Subdivision | None |
| City | Rural Lamont County |
| County | ALBERTA |
| Province | AB |
| Postal Code | T0B 0W0 |

Exterior



Exterior Features Private Setting

Additional Information

Date Listed November 9th, 2024

Days on Market 240

Zoning Zone 60

DATA IS DEEMED RELIABLE BUT IS NOT GUARANTEED ACCURATE BY THE REALTORS® ASSOCIATION OF EDMONTON. COPYRIGHT 2025 BY THE REALTORS® ASSOCIATION OF EDMONTON. ALL RIGHTS RESERVED.Trademarks are owned or controlled by the Canadian Real Estate Association (CREA) and identify real estate professionals who are members of CREA (REALTOR®, REALTORS®) and/or the quality of services they provide (MLS®, Multiple Listing Service®)

Listing information last updated on July 6th, 2025 at 11:17pm MDT