

\$25,000,000 - A51069 Hwy 814, Beaumont

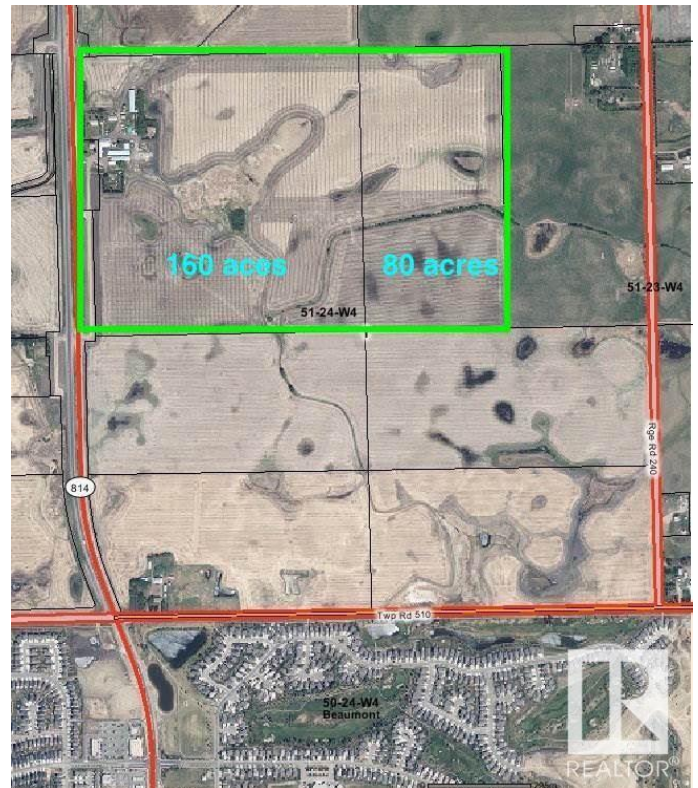
MLS® #E4221968

\$25,000,000

Bedroom, Bathroom,
Land Commercial on 155.85 Acres

Beaumont, Beaumont, AB

DEVELOPMENT LAND IN THE HIGHLY DESIRABLE AREA IN THE CITY OF BEAUMONT. WITH 1/2 MILE OF HWY FRONTAGE. This development land is on 50 st. and has Commercial and Residential Zoning in the ASP. AREA STRUCTURE PLAN is APPROVED. There is 155.85 Acres/ more or less. Water and Sewer is on 50 st. The owner completed numerous studies. These studies are available to the purchaser. Irving Creek on the northern border and a licensed waterway on the property. There are 4 houses and numerous farm building on this property plus a newer freezer/cooler on site. 50th street (hwy 814) is a new 4 lane hwy. There is a service road to the property. Land can be sold separately or with the 81 acres to the east 4-24-51-1-NE. Land to the south has the NSP approved and is in active residential and commercial development. GST may be applicable. To access maps and documents related to the ASP and NSP, you will find it at: www.beaumont.ab.ca Le Reve



Essential Information

MLS® #	E4221968
Price	\$25,000,000
Acres	155.85
Type	Land Commercial

Community Information

Address	A51069 Hwy 814
Area	Leduc County
Subdivision	Beaumont
City	Beaumont
Province	AB
Postal Code	T4X 0K4

Amenities

Features	Creek/River/Stream, Flat Site, No Fence, No Through Road
Is Waterfront	Yes

Additional Information

Date Listed	July 9th, 2013
Zoning	AGR; Future Residential

DATA IS DEEMED RELIABLE BUT IS NOT GUARANTEED ACCURATE BY THE REALTORS® ASSOCIATION OF EDMONTON. COPYRIGHT 2024 BY THE REALTORS® ASSOCIATION OF EDMONTON. ALL RIGHTS RESERVED.Trademarks are owned or controlled by the Canadian Real Estate Association (CREA) and identify real estate professionals who are members of CREA (REALTOR®, REALTORS®) and/or the quality of services they provide (MLS®, Multiple Listing Service®)

Listing information last updated on May 21st, 2024 at 1:47pm MDT