

Courtesy Of Rick Jenkins Of MaxWell Polaris

\$0 - # #112 10466 Fulton Dr, Rural Parkland County

MLS® #E4194252

\$0

Bedroom, Bathroom, 1,367 sqft
Industrial on 0 Acres

Ellis Industrial Park, Rural Parkland County, AB

1,367 sf industrial/retail/office bay. This bay has housed a restaurant business for many years. Bay includes kitchen area, main floor eating area, two washrooms, two man doors and a 200 sf mezzanine. Large windows allow for plenty of natural light on the north and east sides. longer term escalating lease is preferred but shorter leases at higher rates will be considered. Other bays in this multi tenant building are available including up to 3 bays and 7,580 sf contiguous.

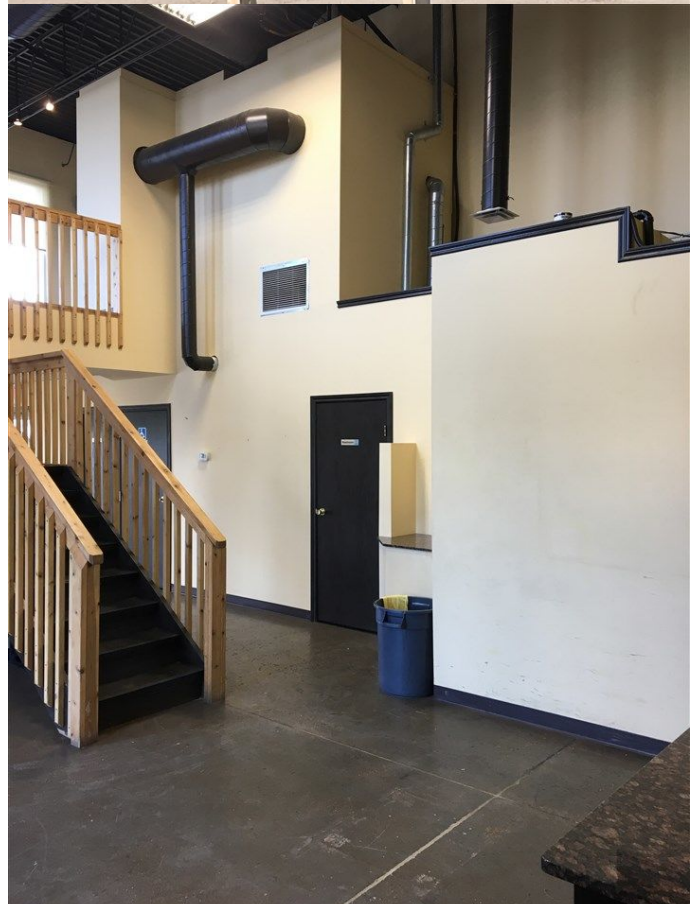
Built in 1980

Essential Information

MLS® #	E4194252
Square Footage	1,367
Acres	0.00
Year Built	1980
Type	Industrial
Status	ACTIVE

Community Information

Address	# #112 10466 Fulton Dr
Area	Parkland
Subdivision	Ellis Industrial Park
City	Rural Parkland County
Province	AB
Postal Code	T7X 5A3



Amenities

Parking Spaces 10

Interior

of Stories 1

Exterior

Construction Concrete Block

Additional Information

Zoning BI

Listing information last updated on July 10th, 2020 at 6:16am MDT